

## PROJECT TEAM

### **Louisiana Department of Transportation & Development (DOTD)**

Office of Project Delivery

- Transportation Planning
- Environmental
- Right of Way

### **Atlas Technical Consultants, LLC**

Prime Consultant

### **Ardman & Associates, Inc.**

Lab Testing and Fieldwork

### **Armeni Consulting Services, LLC**

Bridge Design Criteria and Costs

### **CDM Smith, Inc.**

Travel Demand Model & Toll Analysis

### **FIGG Bridge Engineering, Inc.**

Bridge Design Concepts

### **Franklin Associates, LLC**

Public Involvement

### **GIS Engineering, LLC**

Navigational Considerations

### **GOTECH, Inc.**

Boring and Field Tests

### **Gulf South Research Corp.**

Paleontological and Cultural Resources

### **Inro Consultants, Inc.**

Mesosopic Traffic Modeling

### **Neel-Schaffer, Inc.**

Traffic Modeling & Analysis

### **Providence Engineering & Environmental Group, LLC**

NEPA Analysis & Documentation

### **Quality Engineering & Surveying, LLC**

Land Surveying

### **RECON Environmental, Inc.**

Cultural Resources

### **Shread-Kuyrkendall & Assoc., Inc.**

Roadway Concepts



1201 Capitol Access Road  
Baton Rouge, LA 70802-4438  
Phone (225) 379-1232



Official project website: [mrbsouth.com](http://mrbsouth.com)  
Email address: [info@mrbsouth.com](mailto:info@mrbsouth.com)



## MISSISSIPPI RIVER BRIDGE: LA 1 TO LA 30 CONNECTOR

## COMMUNITY BRIEFINGS

December 9 & 10, 2025



# WHY IS THE PROJECT NEEDED?

The purpose for the proposed project is to improve capacity, access and connectivity between LA 1 and LA 30 across the Mississippi River in the greater Baton Rouge area. It would also provide an alternate route for emergency evacuations in response to incident-related closures. The Proposed Action would enhance linkages in the cross-river transportation network while maintaining environmental and economic viability of the adjacent communities at the new bridge crossings.

The need of the proposed project is to improve overall transportation system operations, increase connectivity in the general area, create redundancy in the transportation system for incident-related closures on Interstate 10 (I-10), relieve congestion on the surrounding transportation network, and improve overall transportation system operations.

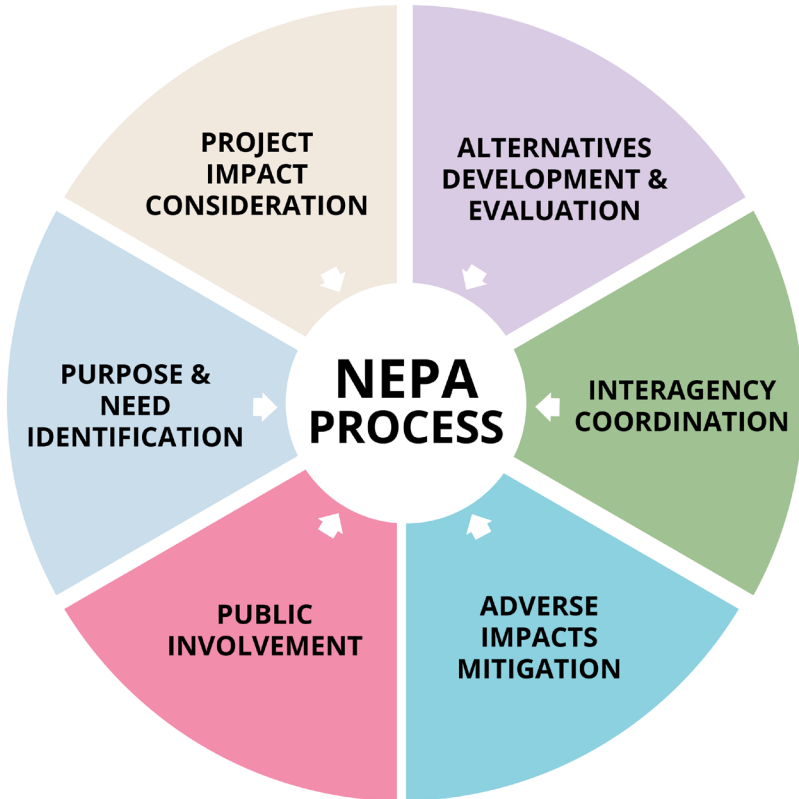
# WHAT IS THE REASON FOR THIS EVENT?

This pair of community briefings are an opportunity to learn about the project status, the progress which has been made, and the remaining tasks to be completed to fulfill the requirements of NEPA and to identify a Preferred Alternative for a new Mississippi River bridge.

# WHAT COMES NEXT?

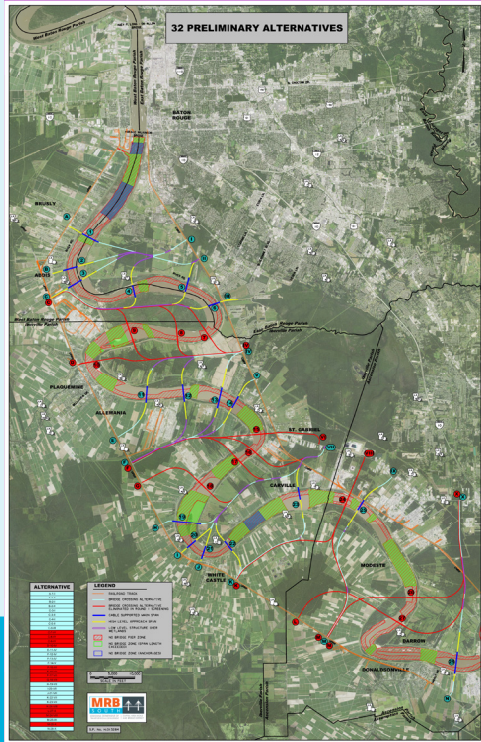
Following these December 2025 briefings, agencies involved in the project will be consulted for the remaining three Feasible Alternatives, the Environmental Assessment document will be prepared, and public meetings will be scheduled again during the first quarter of 2026 when new information will be provided and public input received.

# NEPA PROJECT EVALUATION PROCESS

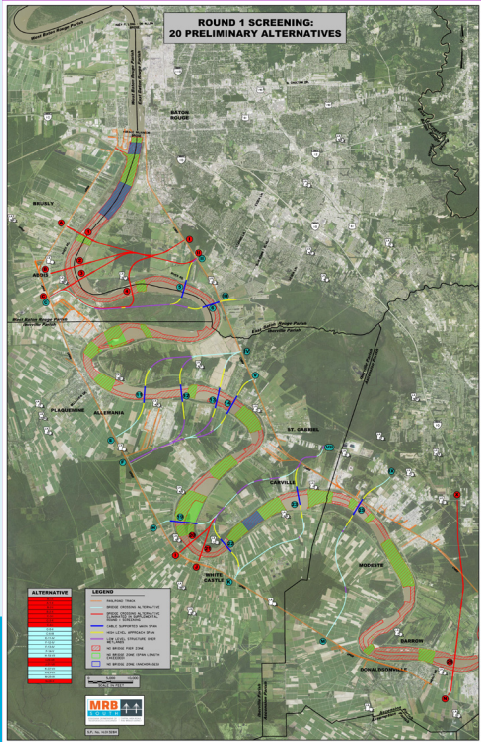


# ALTERNATIVES SCREENING

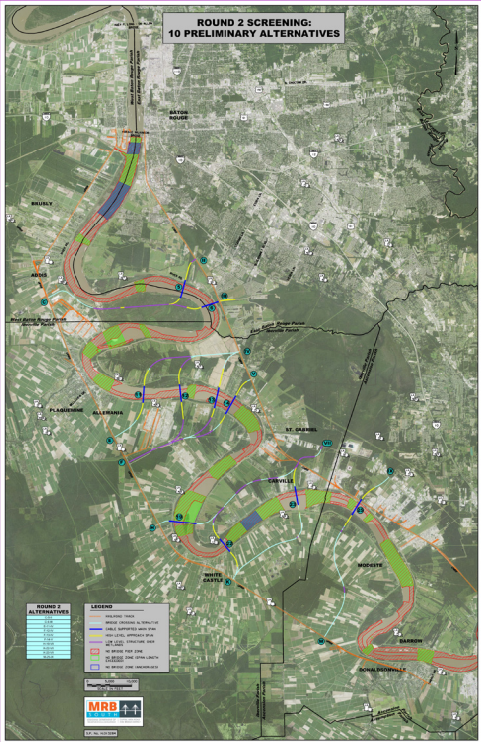
BEGIN WITH 32 ALTERNATIVES



SCREEN TO 20 ALTERNATIVES



SCREEN AGAIN TO 10 ALTERNATIVES



3 ALTERNATIVES ADVANCING TO NEPA PROCESS

