

H.013284

MRB South GBR:

LA 1 to LA 30 Connector

December 2020

Project Progress Update to CARB-D



Project Team

➤ Prime Consultant:

- Atlas Technical Consultants, LLC

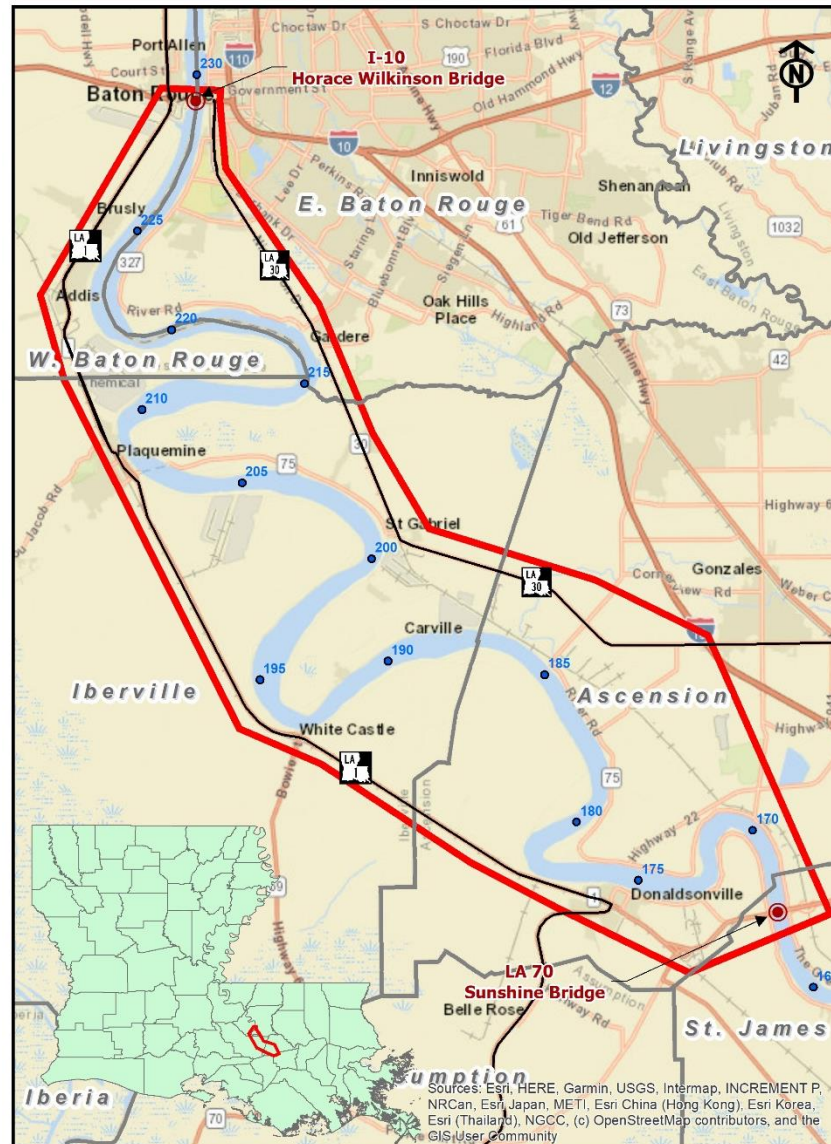
➤ Subconsultants:

- CDM Smith, Inc.
Travel Demand Model & Toll Analysis
- Neel-Schaffer, Inc.
Mesoscopic Model & Traffic Analysis
- INRO Consultants, Inc.
Mesoscopic Model Support
- Franklin Associates, LLC
Public Involvement
- FIGG Bridge Engineering, Inc.
Bridge Technical Concepts
- Shread-Kuyrkendall & Assoc., Inc.
Roadway Technical Concepts
- GIS Engineering, LLC
Navigational Considerations
- Providence Engineering & Environmental Group LLC
Environmental Inventory

Project Overview

- Ultimate objective is to construct a new crossing of the Mississippi River
- *Draft Purpose and Need:*
 - To provide increased capacity and improved connectivity across the Mississippi River and to provide an alternate route for emergency evacuations or in response to incident-related closures
- Part I: Enhanced Planning Study
(July 2020 – Summer 2022)
- Part II: Environmental Evaluation
(Summer/Fall 2022 – Summer 2024)

Study Area

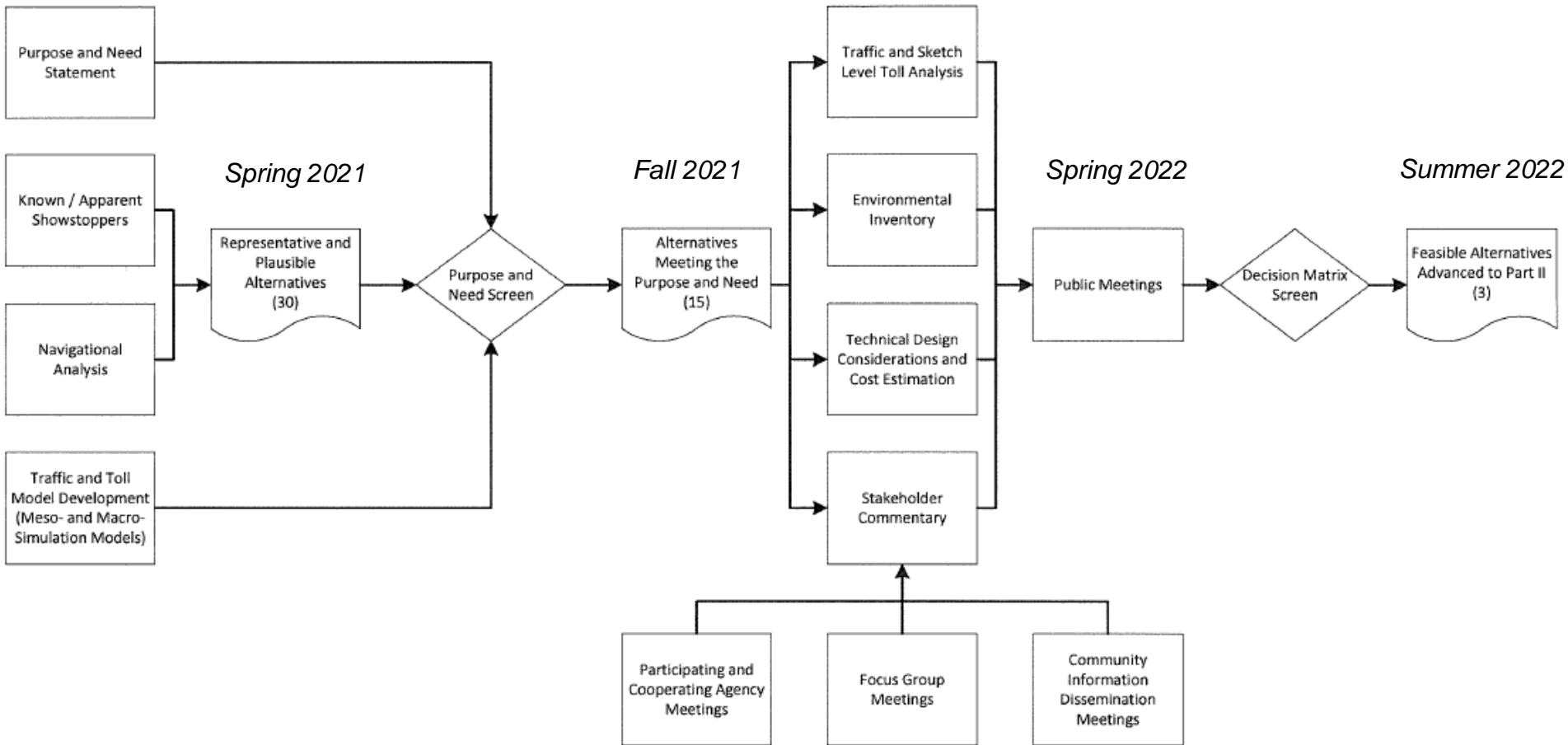


Deliverables (Part I)

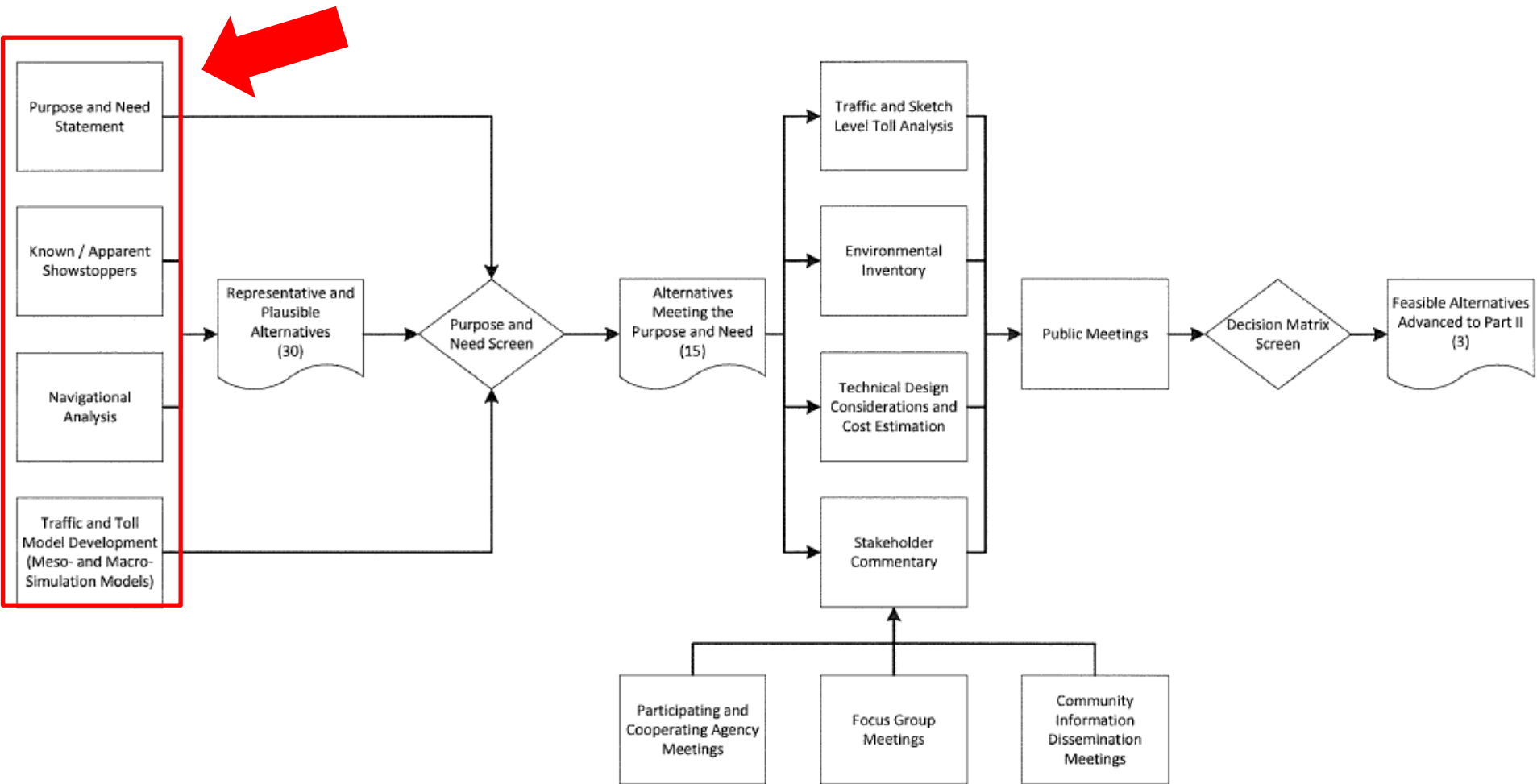
- Macroscopic Traffic Model (Travel Demand)
- Mesoscopic Traffic Model
- Traffic Analysis
- Level 1 “Sketch” Toll Analysis
- Navigational Analysis
- Environmental Inventory
- Preliminary Range of Alternatives
- Public Engagement Plan
- Part I Technical Report

Most Feasible Alternatives to Advance to Part II

Workflow and Timeline (Part I)



Current Status (Part I)



Work In Progress

➤ Environmental

- Purpose and Need
- Project Work Plan
- Stakeholder Letters
- Avoidance Mapping

➤ Public Involvement

- Public Engagement Plan
- Website Development

➤ Navigational Analysis

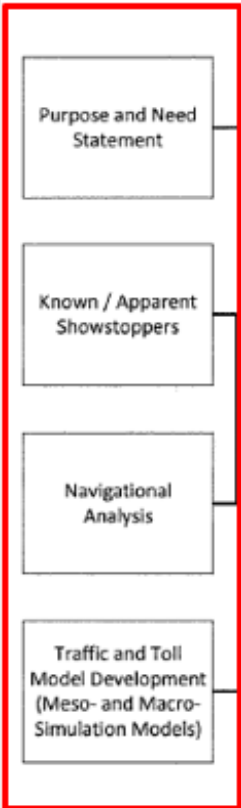
- Methodology Development
- Avoidance Mapping

➤ Technical Considerations

- Bridge Design Criteria
- Roadway Design Criteria

➤ Traffic and Toll Modeling

- Data Collection Report
- Base Model Validation
 - Macroscopic Model (Travel Demand)
 - Mesoscopic Model (Traffic Impacts)



Navigational Analysis

- Avoidance Considerations (i.e. “No Pier Locations”)
 - Deep Draft Vessels
 - Shallow Draft Vessels
 - Anchorages
 - Mooring Structures and
 - Mooring Areas
 - Fleeting Areas
 - Channel Crossing Locations
 - Permitted Facilities (i.e. Docks)
 - Offsets & Proximity to Existing Facilities
 - Canal Entrances
 - Terminal Access Channels
 - Submarine Cables
 - Submerged Pipelines

- Regulatory Agency and Stakeholder Coordination

Traffic Model Development

➤ Macroscopic Model (Travel Demand Model)

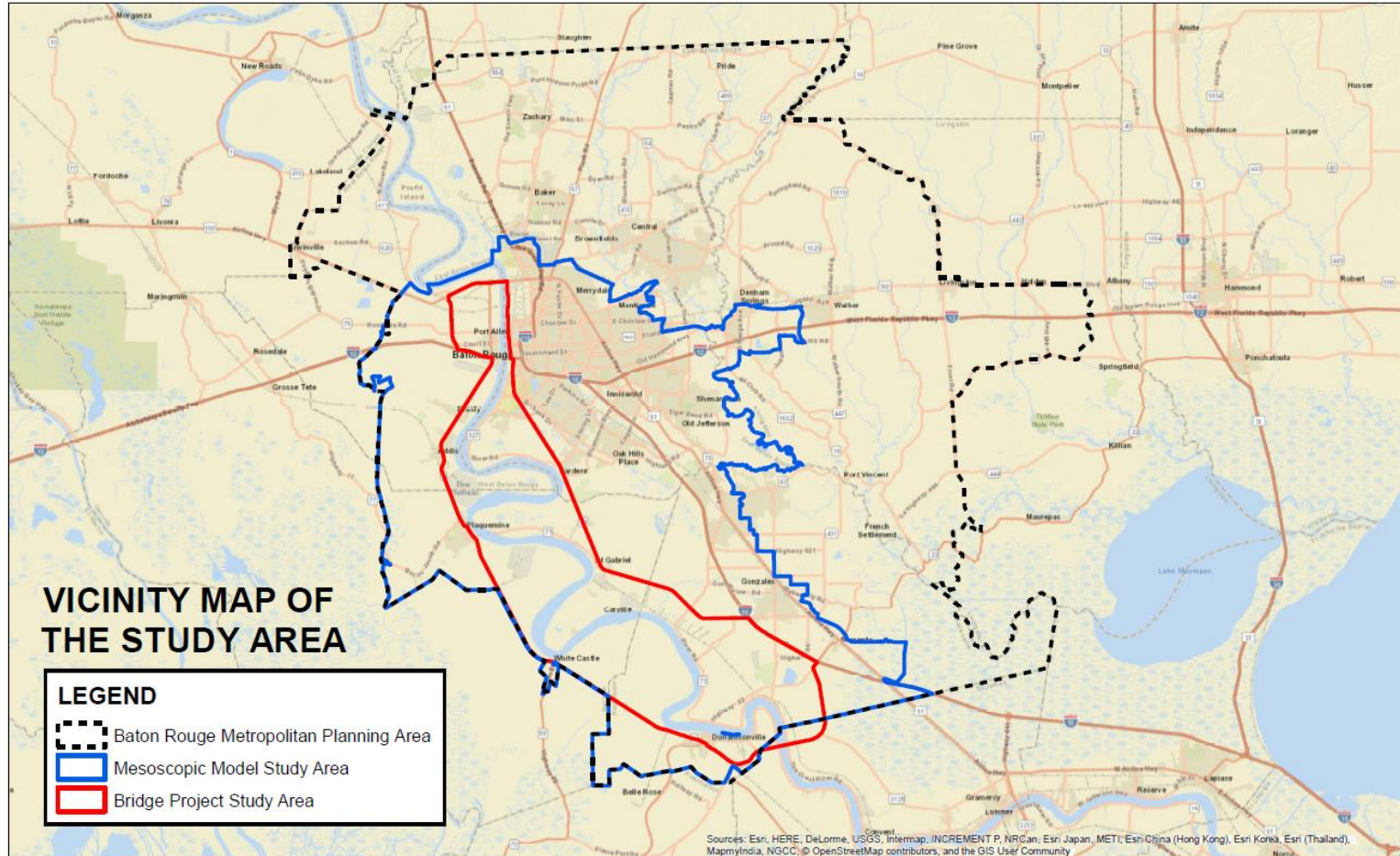
- Based on CRPC Regional Travel Demand Model
- MRB Project Model updated to include project-specific conditions at 2019 levels
- Produces forecasts of future year traffic (2032 and 2042)
- Traffic forecasts used in the initial assessment of alternatives
- Traffic forecasts used as inputs to Mesoscopic Model and to Traffic and Revenue Model

Traffic Model Development

➤ Mesoscopic Model (“Traffic” Model)

- Traffic forecast inputs from the Travel Demand Model
- Detailed representation of study area network and traffic controls (Signals, Stop and Yield Signs, Turn Lanes etc.), including I-10, I-12, I-110, LA 1, LA 30 and connecting roadways
- Provides summary performance measures about traffic operations in terms of route choice based on congestion, travel time, speed and delay for no-build and build alternatives.

Mesososcopic Model Study Area



Traffic Model Development

- **Traffic and Revenue Model (Toll Model)**
 - Traffic forecast inputs from the Travel Demand Model
 - Provides transaction and toll revenue streams (30-year period) for short-listed alignments

Status of Traffic Model Development

➤ Macroscopic Model (Travel Demand Model)

- Base Year Model Validation DRAFT Complete, Under Review
- Base Year Model Validation Report DRAFT Complete, Under Review
- Future Year No-Build Model DRAFT Complete
- Future Year No-Build Model Report DRAFT Expected by mid-Dec
- Future Year Build Model Scheduled March 2021
- Build Model Documentation Scheduled March 2021

➤ Mesoscopic Model (“Traffic” Model)

- Base Year Model Under Development
- Future Year No-Build Model Scheduled Jan 2021
- Future Year Build Models Scheduled July 2021

➤ Traffic and Revenue Model (Toll Model)

- Model Development Scheduled May 2021
- Level 1 Toll Study Scheduled May/August 2021

Public Involvement

- Project Informational Website
 - Coming Soon
- Agency & Stakeholder Meetings
 - On-Going as Needed
- Public Meetings
 - Spring 2022

Future Steps

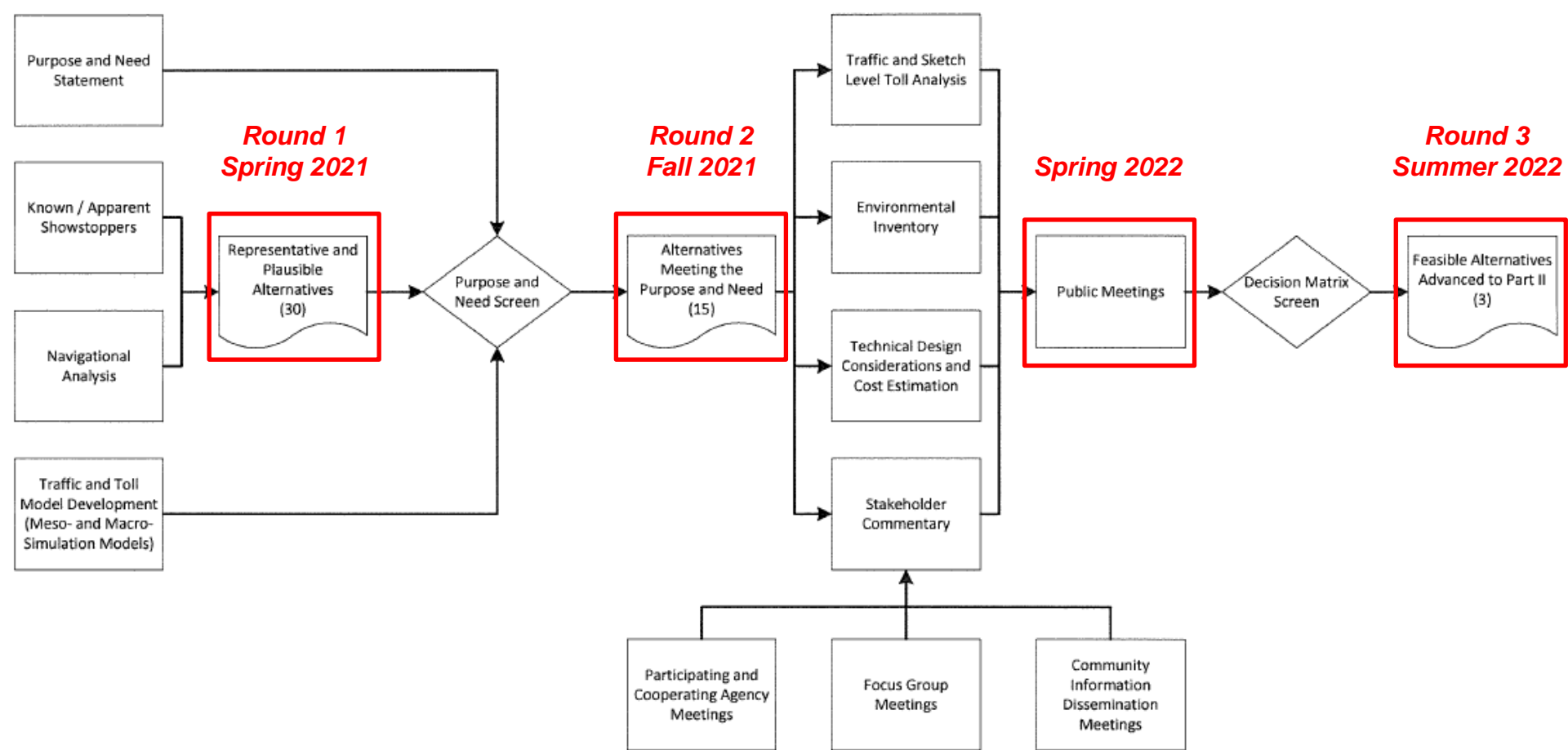
Screening Methodology (Part I)

- Round 1 Screening (30 Maximum)
 - Plausible Alternatives
- Round 2 Screening (15 Estimated)
 - Alternatives Meeting Project Purpose and Need
 - Incorporates Travel Demand Information

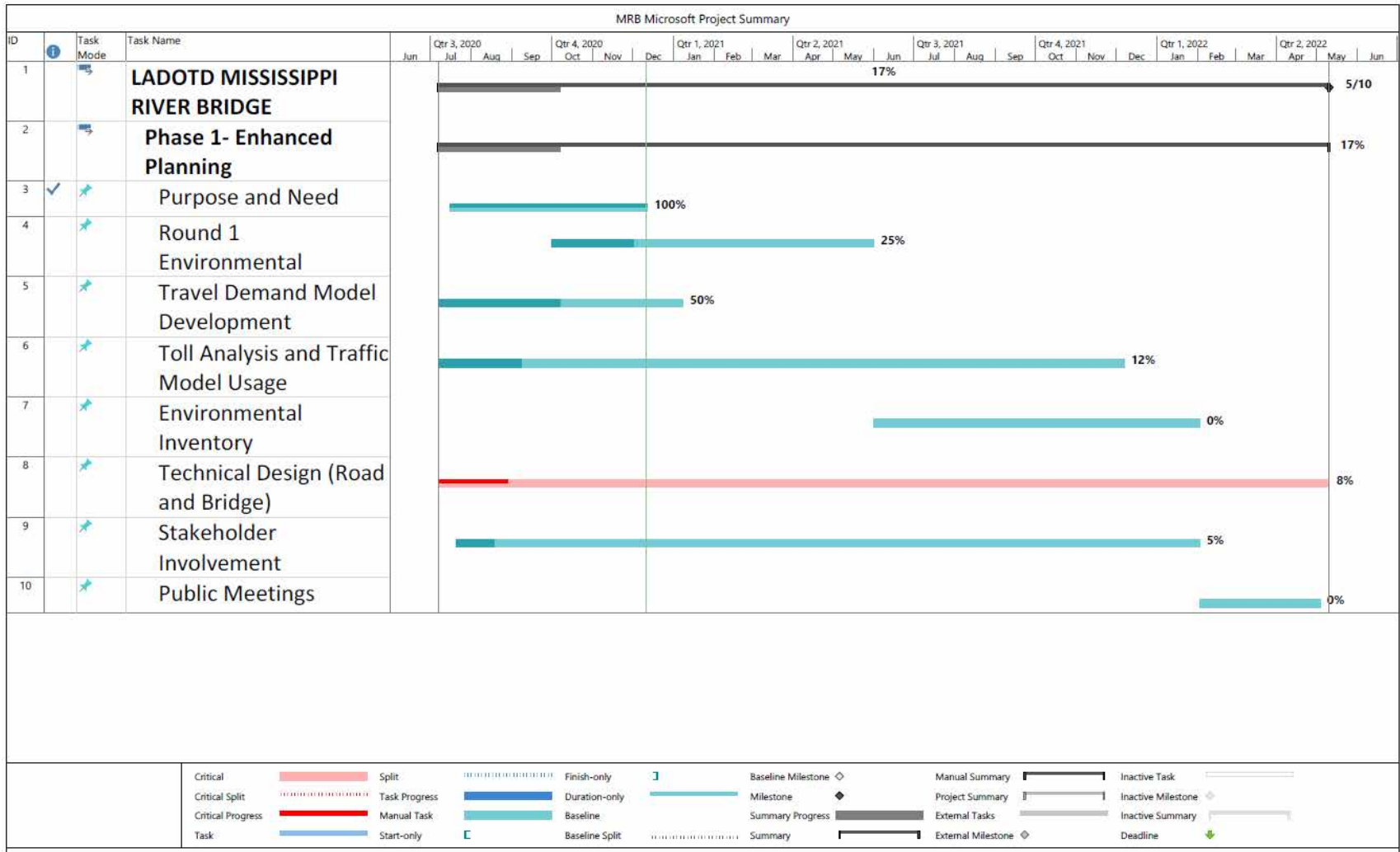
*****PUBLIC MEETINGS*****

- Round 3 Screening (3 Estimated)
 - Most Feasible Alternatives

Project Workflow



Overall Progress (Part I)



Thank You!