

# H.013284

## MRB South GBR:

### LA 1 to LA 30 Connector

June 30, 2025

Project Progress Update to CARB-D



# Project Team

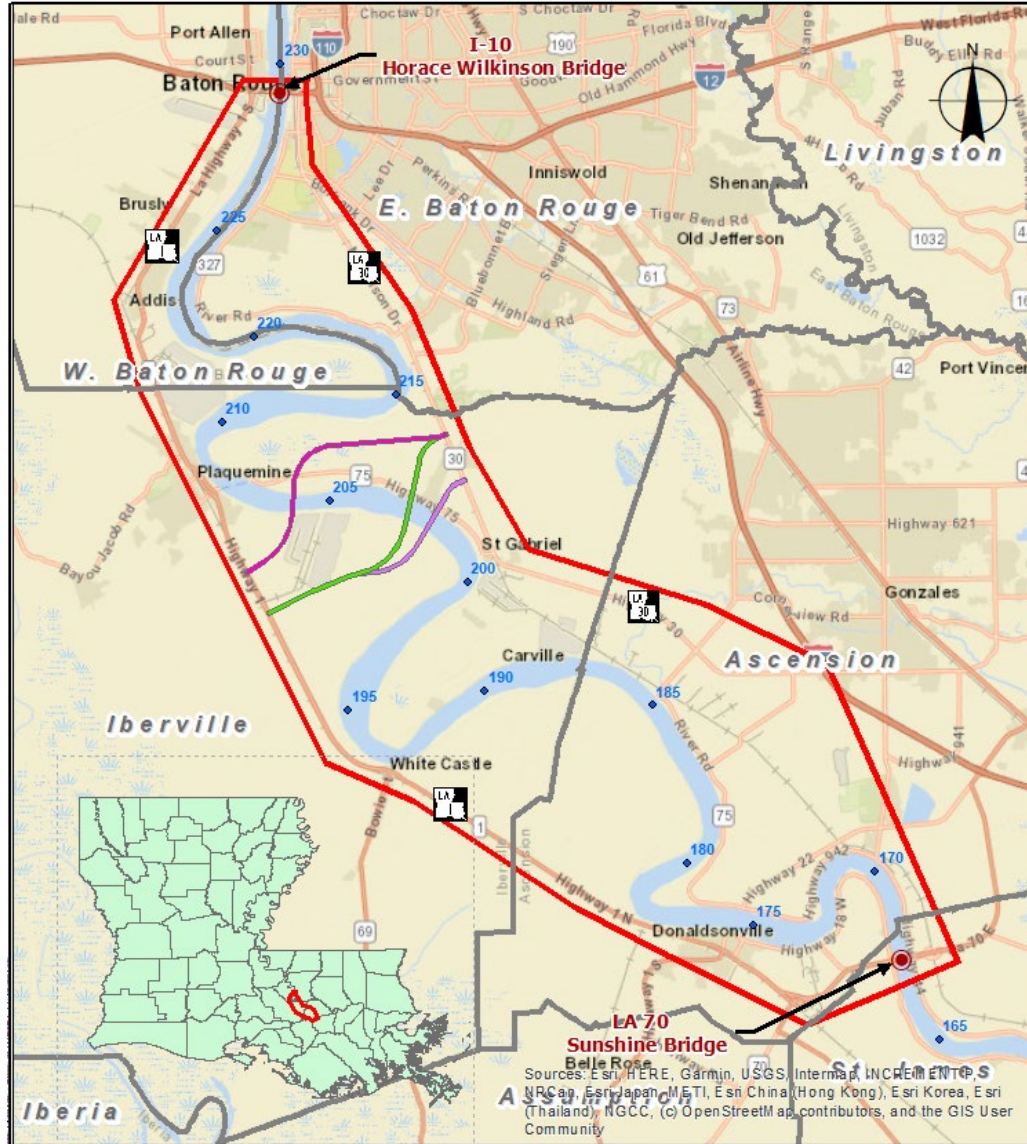
## ➤ Prime Consultant:

- Atlas Technical Consultants, LLC

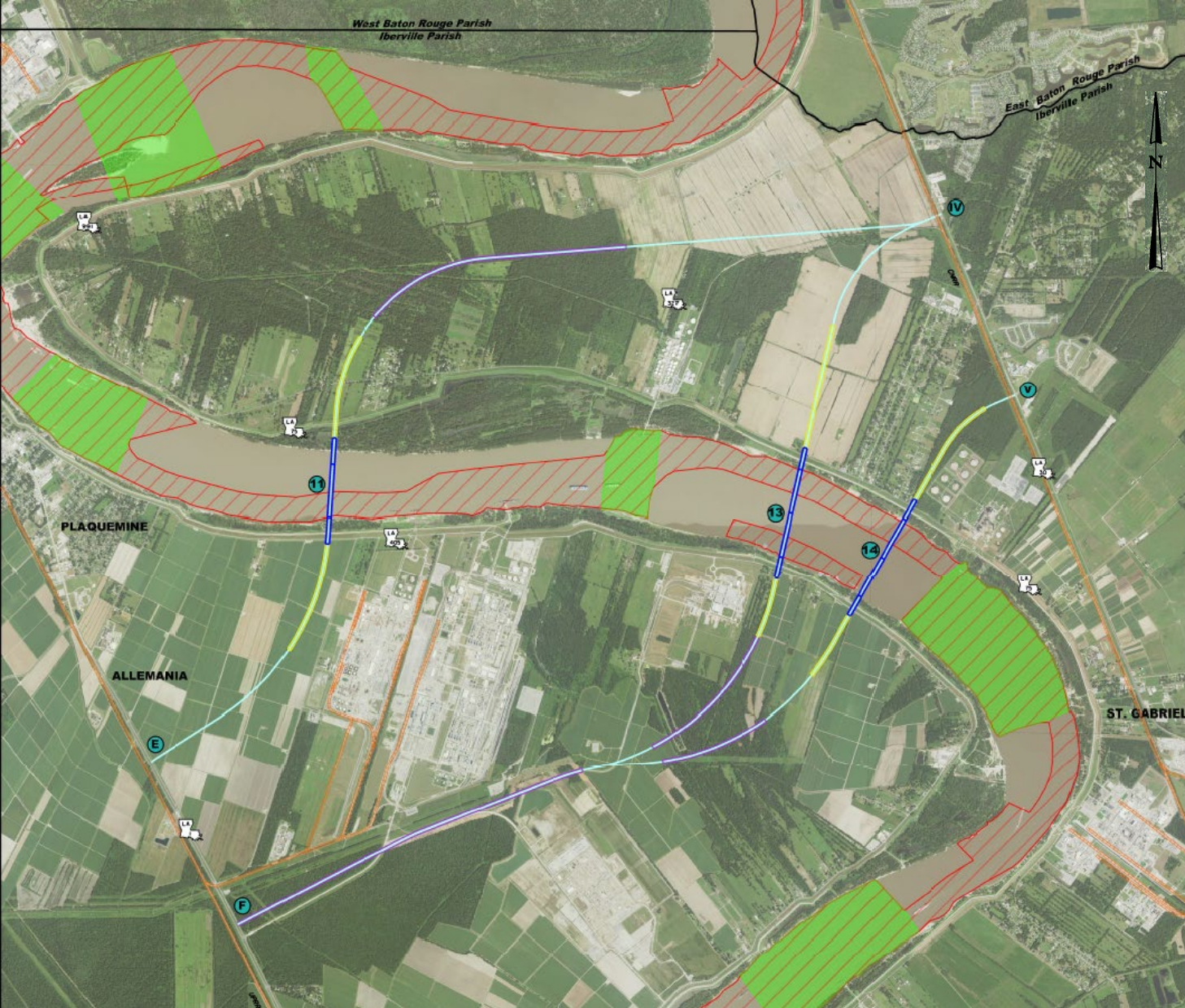
## ➤ Subconsultants:

- |   |  |
|---|--|
| — CDM Smith, Inc.<br><i>Travel Demand Model &amp; Toll Analysis</i>     | — FIGG Bridge Engineering, Inc.<br><i>Bridge Technical Concepts</i>                  |
| — Neel-Schaffer, Inc.<br><i>Mesoscopic Model &amp; Traffic Analysis</i> | — Shread-Kuyrkendall & Assoc., Inc.<br><i>Roadway Technical Concepts</i>             |
| — INRO Consultants, Inc.<br><i>Mesoscopic Model Support</i>             | — GIS Engineering, LLC<br><i>Navigational Considerations</i>                         |
| — Franklin Associates, LLC<br><i>Public Involvement</i>                 | — Providence Engineering & Environmental Group LLC<br><i>Environmental Inventory</i> |

# Study Area







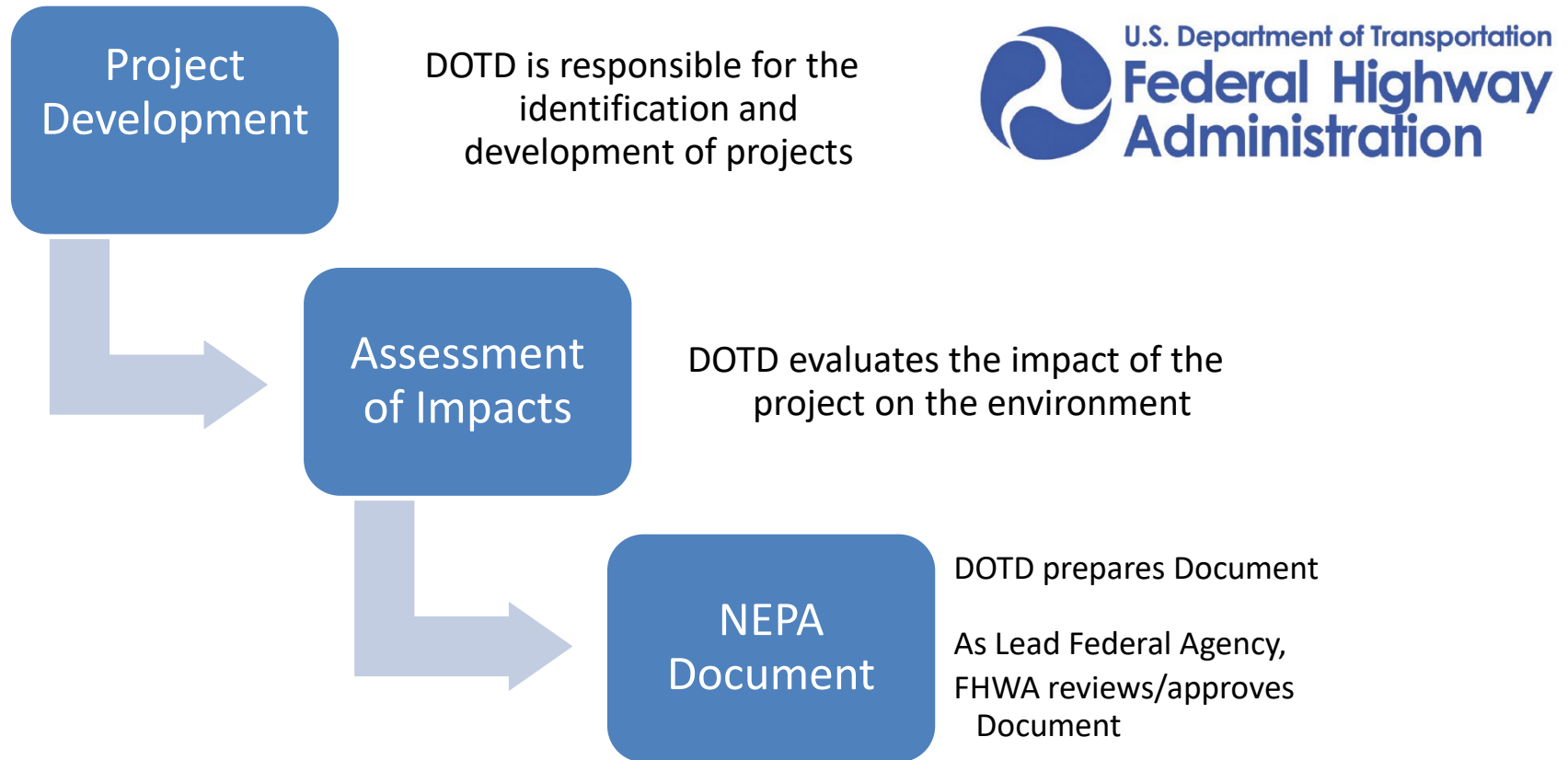
## ROUND 2 ALTERNATIVES

E-11-IV
F-13-IV
F-14-V

### LEGEND

- RAILROAD TRACK
- BRIDGE CROSSING ALTERNATIVE
- CABLE SUPPORTED MAIN SPAN
- HIGH LEVEL APPROACH SPAN
- LOW LEVEL STRUCTURE OVER WETLANDS
- NO BRIDGE PIER ZONE
- NO BRIDGE ZONE (SPAN LENGTH EXCEEDED)
- NO BRIDGE ZONE (ANCHORAGES)

# NEPA & Transportation Decision making



# Draft Scope for Part II (Environmental)

## ➤ Pre-NEPA Tasks:

- Surveys
  - LiDAR, Topo, SUE, Bathymetric
  - Geotech
- Line & Grade
- Conceptual Bridge Design
- Cost Estimates
- H&H

## ➤ NEPA Tasks:

- Public & Agency Outreach
- Document Preparation (EA/EIS)
- Field Surveys
  - Wetlands/T&E
  - Cultural Resources
  - Air, Noise, CSRP, Phase I ESA

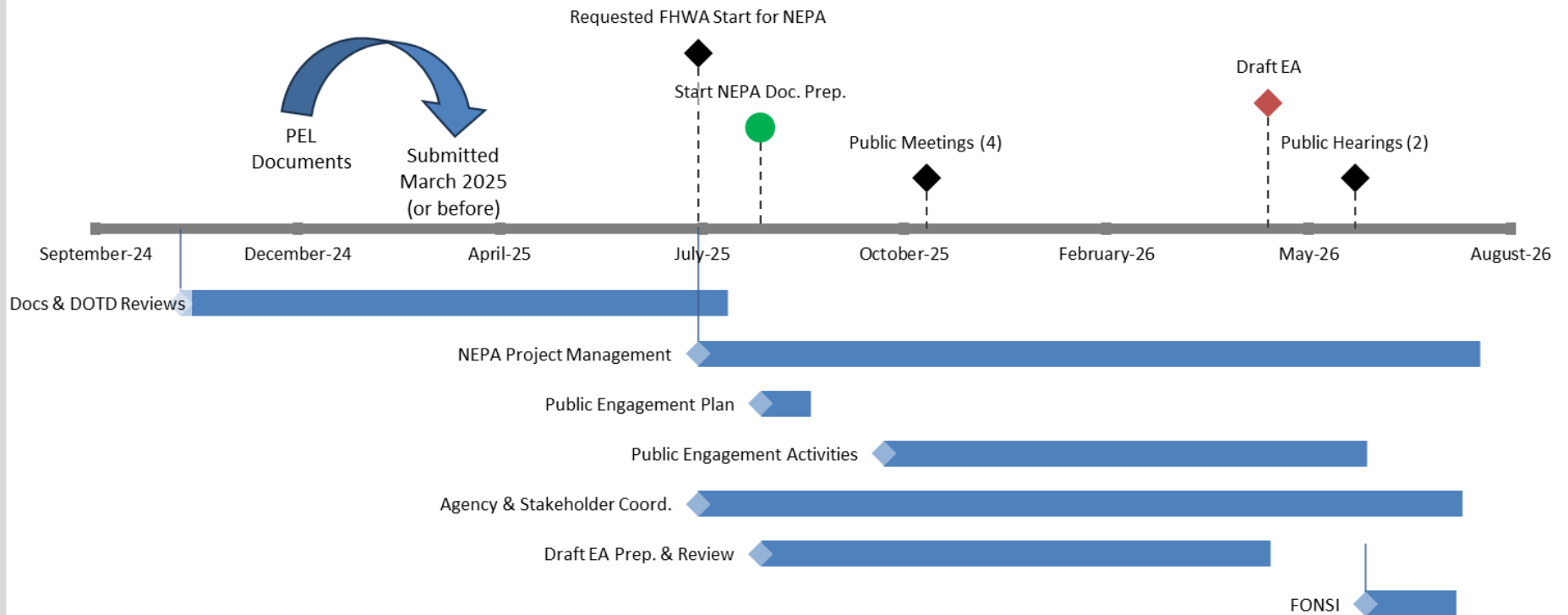
## ➤ Traffic Refinement

## ➤ Intermediate Toll Study

*\*The timeline for Traffic and Toll Analyses will span from pre-NEPA through completion of NEPA*

# Anticipated Schedule

## Mississippi River Bridge South: NEPA Phase





# Potential Public Meeting Venues





# Recommended Public Meeting Venues



St. Gabriel  
Community Center



Clark Community  
Center (Plaquemine)



Addis Community  
Center



Lamar-Dixon

**Official Project Website**

**mrbsouth.com**

**Thank You**