

H.013284

MRB South GBR:

LA 1 to LA 30 Connector

March 27, 2023

Project Progress Update to CARB-D



LOUISIANA DEPARTMENT OF TRANSPORTATION & DEVELOPMENT | CAPITAL AREA ROAD AND BRIDGE DISTRICT



www.dotd.la.gov

Project Team (Part II – Environmental Evaluation)

➤ Prime Consultant:

- Atlas Technical Consultants, LLC

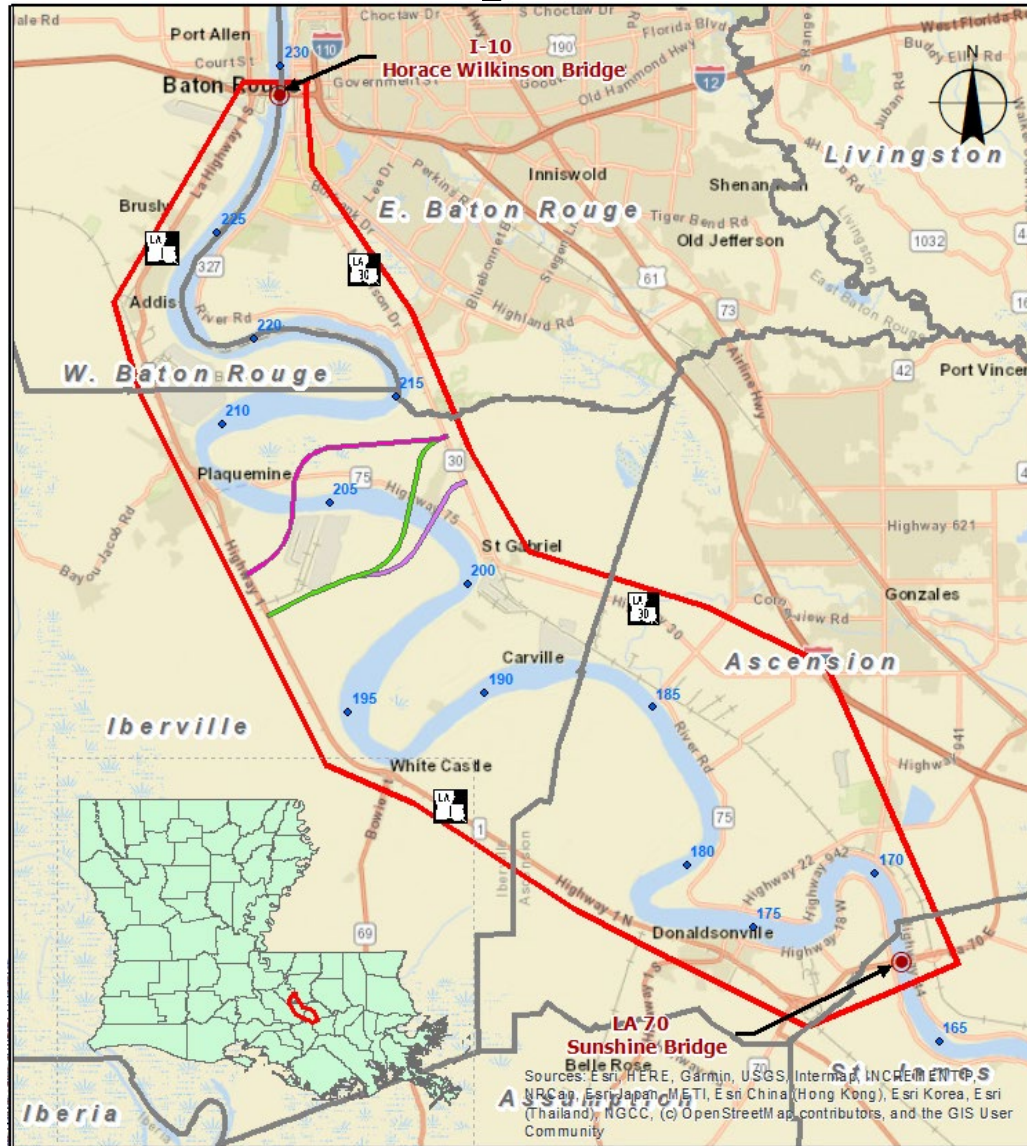
➤ Subconsultants:

- CDM Smith
Toll Analysis
- Neel-Schaffer
Traffic Analysis
- INRO Consultants
Mesosopic Model Support
- Franklin Assoc.
Public Involvement
- GSRC &
RECON Offshore
Cultural Resources
- FIGG Bridge Engineering
Bridge Technical Concepts
- GIS Engineering
Bathymetric Survey
- Shread-Kuyrkendall
Roadway Technical Concepts
- Armeni (KCI Technologies)
Cost Estimating
- Providence
Environmental Inventory
- Ardaman
Geotech
- GOTECH
Topographic Survey
- Quality Eng.
& Surveying
SUE Survey

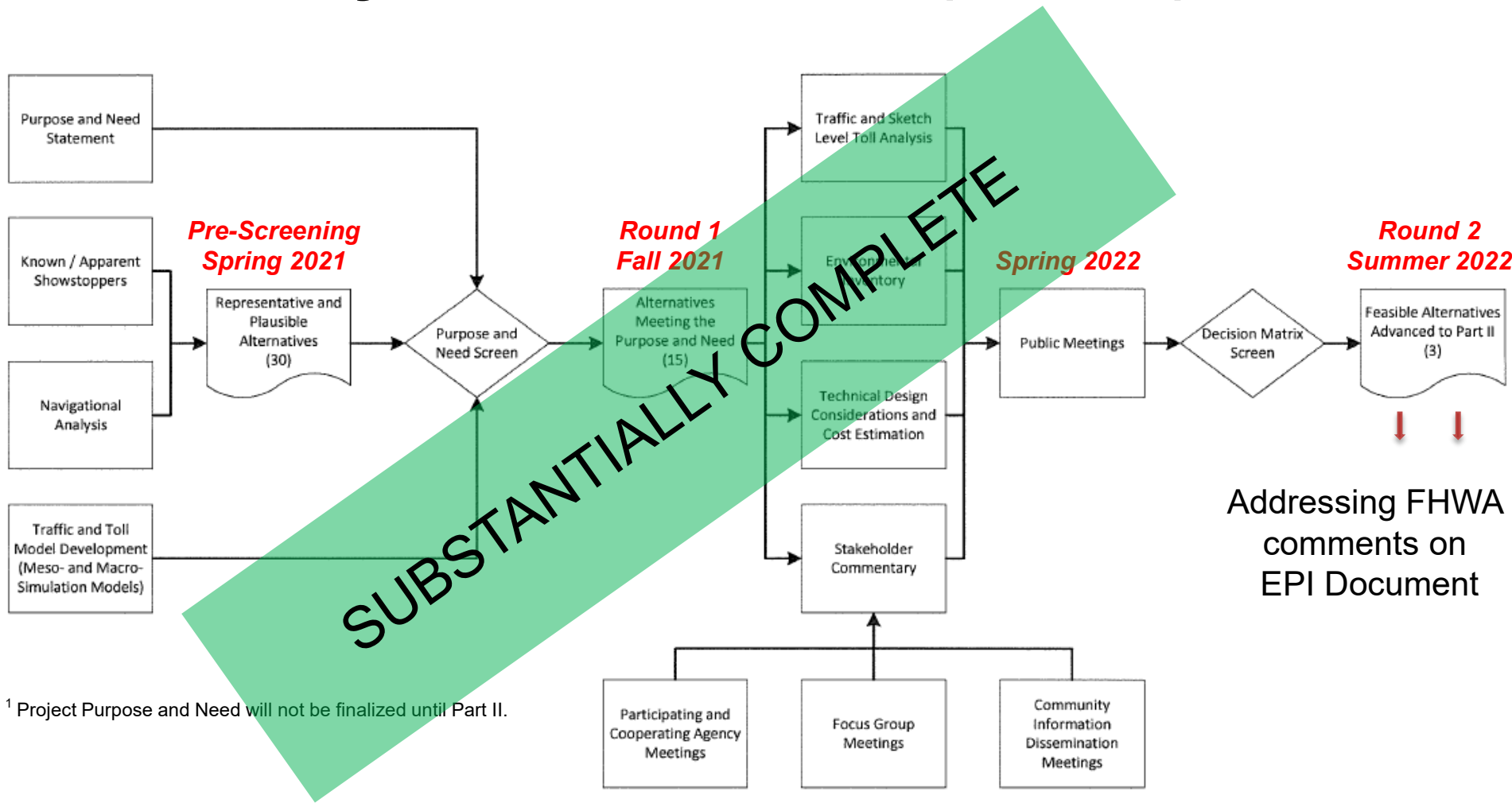
Project Overview

- Ultimate objective is to construct a new crossing of the Mississippi River in the Greater Baton Rouge Area
- **Part I: Enhanced Planning Study**
(July 2020 – Summer 2022)
- **Part II: Environmental Evaluation**
(Fall/Winter 2022 – Summer 2024)

Study Area



Project Workflow (Part I)



¹ Project Purpose and Need will not be finalized until Part II.



ROUND 2 ALTERNATIVES

- E-11-IV
- F-13-IV
- F-14-V

LEGEND

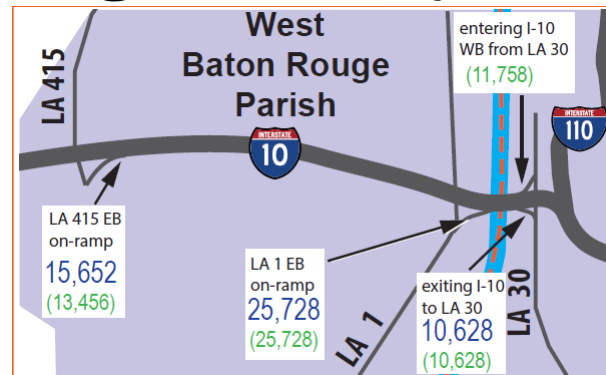
- RAILROAD TRACK
- BRIDGE CROSSING ALTERNATIVE
- CABLE SUPPORTED MAIN SPAN
- HIGH LEVEL APPROACH SPAN
- LOW LEVEL STRUCTURE OVER WETLANDS
- NO BRIDGE PIER ZONE
- NO BRIDGE ZONE (SPAN LENGTH EXCEEDED)
- NO BRIDGE ZONE (ANCHORAGES)

Benefits of a new River Crossing

- Meets our Purpose and Need:
 - Increased Capacity & Improved Connectivity
 - Alternate Route for Incident Management
 - Improves Overall Transportation System Operations
- Proposed New Bridge Crossing expected to serve primarily LOCAL traffic between the East Bank and West Bank of MS River

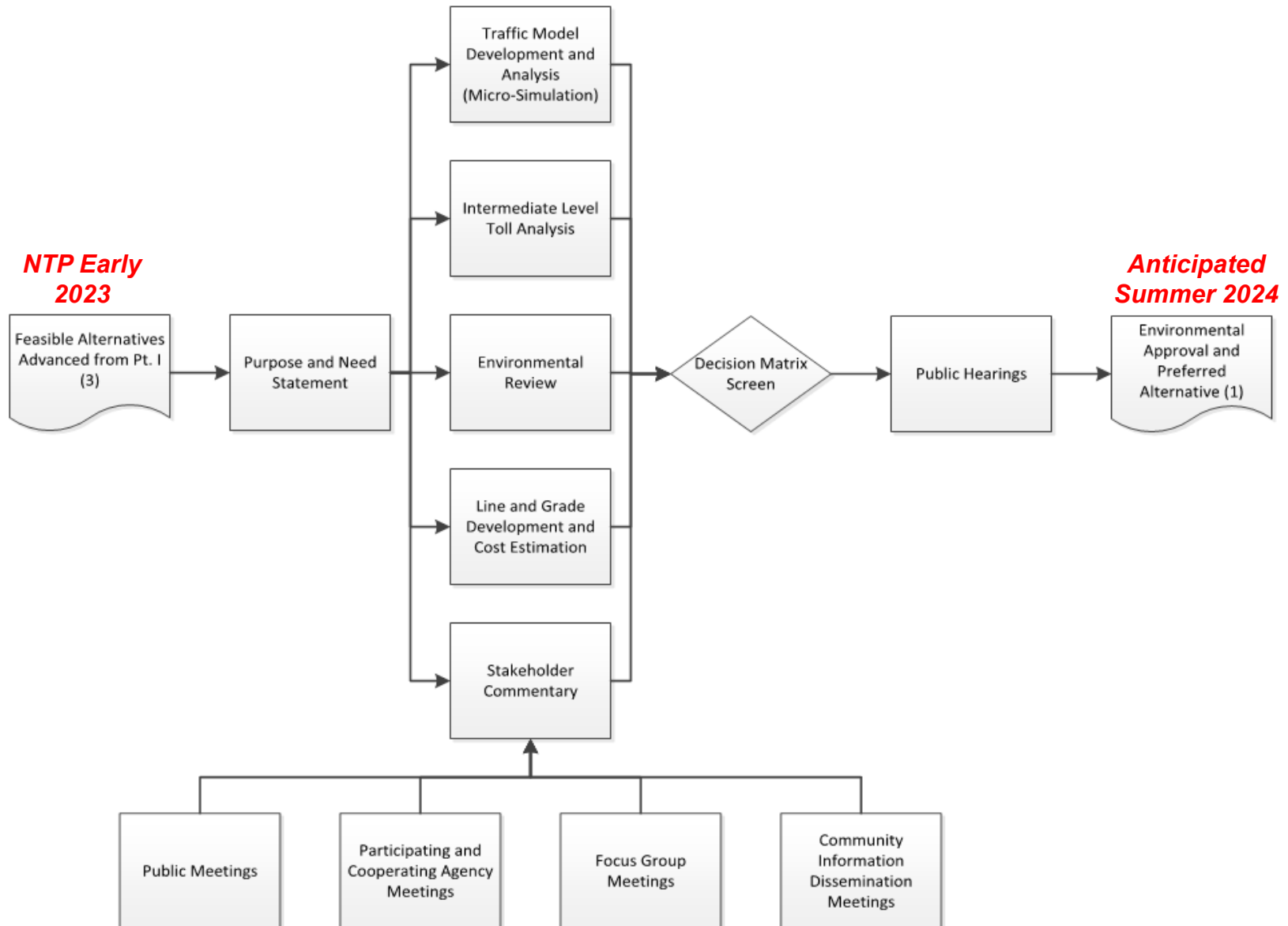
Benefits of a new River Crossing

- Greatest singular travel time benefit projected to be on LA 1 North Bound in the PM Peak Hour
 - Expected to reduce maximum queue length near I-10 East Bound Merge Ramp by 50%



- Expected to save over 1 Million hours of travel time annually

Project Workflow (Part II)



Scope for Part II (Environmental)

➤ Pre-NEPA Tasks:

- Surveys
 - LiDAR
 - Topographic & SUE
 - Bathymetric
 - Geotech
- Line & Grade
- Traffic Refinement
 - Data Collection
- Intermediate Toll Study
- Conceptual Bridge Design
- Cost Estimates
- H&H

➤ Public & Agency Outreach (ongoing)

**The timeline for Traffic and Toll Analyses will span from pre-NEPA through completion of NEPA*

Scope for Part II (Environmental)

➤ NEPA Tasks:

- Public & Agency Outreach
 - Stakeholders
 - Public Meetings / Public Hearings
- Document Preparation (EA/EIS)
- Field Surveys
 - Wetlands/T&E
 - Cultural Resources
 - Air, Noise, CSRP, Phase I ESA



➤ Traffic Refinement

➤ Intermediate Toll Study

**The timeline for Traffic and Toll Analyses will span from pre-NEPA through completion of NEPA*

Thank You!