



APPENDIX I

EJ SCREEN REPORTS

EJScreen Report (Version 2.0)



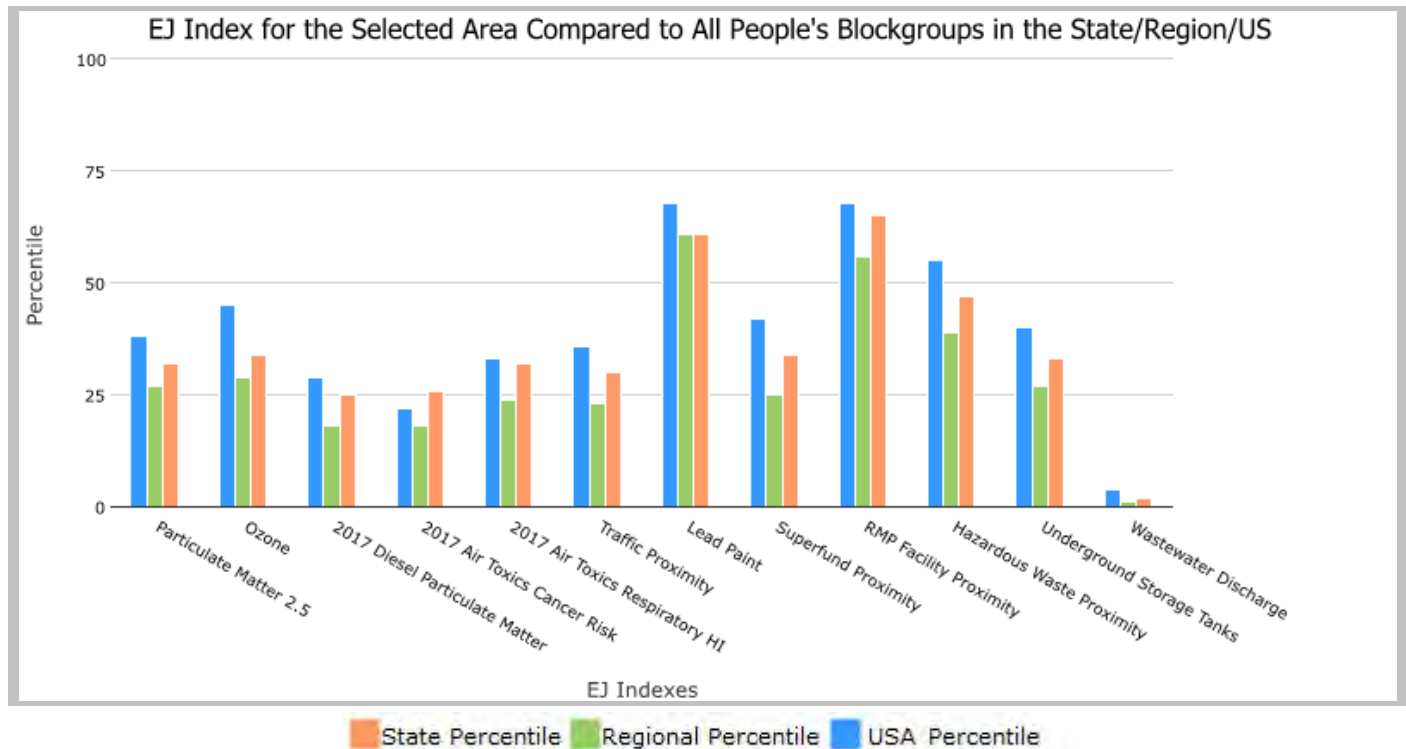
1 mile Ring around the Area, LOUISIANA, EPA Region 6

Approximate Population: 2,626

Input Area (sq. miles): 19.57

MRB S - E-11-IV

Selected Variables	State Percentile	EPA Region Percentile	USA Percentile
Environmental Justice Indexes			
EJ Index for Particulate Matter 2.5	32	27	38
EJ Index for Ozone	34	29	45
EJ Index for 2017 Diesel Particulate Matter*	25	18	29
EJ Index for 2017 Air Toxics Cancer Risk*	26	18	22
EJ Index for 2017 Air Toxics Respiratory HI*	32	24	33
EJ Index for Traffic Proximity	30	23	36
EJ Index for Lead Paint	61	61	68
EJ Index for Superfund Proximity	34	25	42
EJ Index for RMP Facility Proximity	65	56	68
EJ Index for Hazardous Waste Proximity	47	39	55
EJ Index for Underground Storage Tanks	33	27	40
EJ Index for Wastewater Discharge	2	1	4



This report shows the values for environmental and demographic indicators and EJSCREEN indexes. It shows environmental and demographic raw data (e.g., the estimated concentration of ozone in the air), and also shows what percentile each raw data value represents. These percentiles provide perspective on how the selected block group or buffer area compares to the entire state, EPA region, or nation. For example, if a given location is at the 95th percentile nationwide, this means that only 5 percent of the US population has a higher block group value than the average person in the location being analyzed. The years for which the data are available, and the methods used, vary across these indicators. Important caveats and uncertainties apply to this screening-level information, so it is essential to understand the limitations on appropriate interpretations and applications of these indicators. Please see EJSCREEN documentation for discussion of these issues before using reports.

EJScreen Report (Version 2.0)

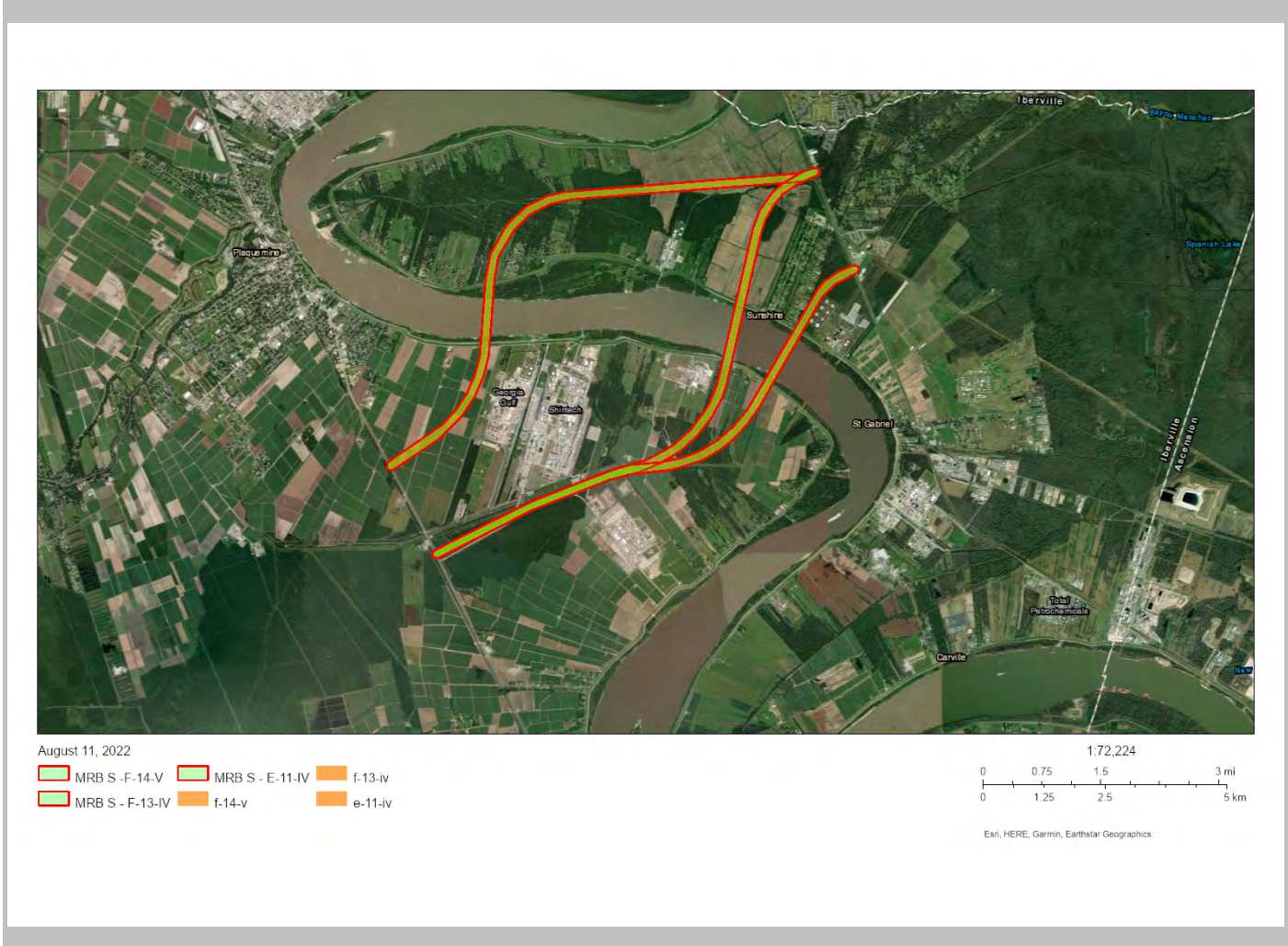


1 mile Ring around the Area, LOUISIANA, EPA Region 6

Approximate Population: 2,626

Input Area (sq. miles): 19.57

MRB S - E-11-IV



Sites reporting to EPA	
Superfund NPL	0
Hazardous Waste Treatment, Storage, and Disposal Facilities (TSDF)	2

EJScreen Report (Version 2.0)

1 mile Ring around the Area, LOUISIANA, EPA Region 6

Approximate Population: 2,626

Input Area (sq. miles): 19.57

MRB S - E-11-IV

Selected Variables	Value	State Avg.	%ile in State	EPA Region Avg.	%ile in EPA Region	USA Avg.	%ile in USA
Pollution and Sources							
Particulate Matter 2.5 ($\mu\text{g}/\text{m}^3$)	10.2	9.22	91	9.32	82	8.74	85
Ozone (ppb)	37.4	37.2	51	41.1	26	42.6	18
2017 Diesel Particulate Matter* ($\mu\text{g}/\text{m}^3$)	0.347	0.298	67	0.219	80-90th	0.295	70-80th
2017 Air Toxics Cancer Risk* (lifetime risk per million)	190	41	99	32	95-100th	29	95-100th
2017 Air Toxics Respiratory HI*	0.59	0.45	95	0.37	95-100th	0.36	95-100th
Traffic Proximity (daily traffic count/distance to road)	27	560	17	470	14	710	15
Lead Paint (% Pre-1960 Housing)	0.037	0.2	24	0.16	41	0.28	25
Superfund Proximity (site count/km distance)	0.033	0.086	37	0.08	43	0.13	29
RMP Facility Proximity (facility count/km distance)	1.1	0.91	72	0.83	77	0.75	79
Hazardous Waste Proximity (facility count/km distance)	1.1	1.4	59	0.8	77	2.2	59
Underground Storage Tanks (count/km ²)	0.13	2	26	2	22	3.9	25
Wastewater Discharge (toxicity-weighted concentration/m distance)	0.5	0.42	94	0.5	96	12	91
Socioeconomic Indicators							
Demographic Index	35%	40%	49	44%	41	36%	57
People of Color	46%	41%	61	52%	46	40%	63
Low Income	24%	39%	26	36%	34	31%	43
Unemployment Rate	1%	6%	18	5%	17	5%	16
Linguistically Isolated	0%	2%	63	6%	37	5%	45
Less Than High School Education	11%	15%	42	15%	46	12%	58
Under Age 5	6%	7%	49	7%	45	6%	54
Over Age 64	19%	15%	75	13%	80	16%	72

*Diesel particulate matter, air toxics cancer risk, and air toxics respiratory hazard index are from the EPA's 2017 Air Toxics Data Update, which is the Agency's ongoing, comprehensive evaluation of air toxics in the United States. This effort aims to prioritize air toxics, emission sources, and locations of interest for further study. It is important to remember that the air toxics data presented here provide broad estimates of health risks over geographic areas of the country, not definitive risks to specific individuals or locations. Cancer risks and hazard indices from the Air Toxics Data Update are reported to one significant figure and any additional significant figures here are due to rounding. More information on the Air Toxics Data Update can be found at: <https://www.epa.gov/haps/air-toxics-data-update>.

For additional information, see: www.epa.gov/environmentaljustice

EJScreen is a screening tool for pre-decisional use only. It can help identify areas that may warrant additional consideration, analysis, or outreach. It does not provide a basis for decision-making, but it may help identify potential areas of EJ concern. Users should keep in mind that screening tools are subject to substantial uncertainty in their demographic and environmental data, particularly when looking at small geographic areas. Important caveats and uncertainties apply to this screening-level information, so it is essential to understand the limitations on appropriate interpretations and applications of these indicators. Please see EJScreen documentation for discussion of these issues before using reports. This screening tool does not provide data on every environmental impact and demographic factor that may be relevant to a particular location. EJScreen outputs should be supplemented with additional information and local knowledge before taking any action to address potential EJ concerns.

EJScreen Report (Version 2.0)



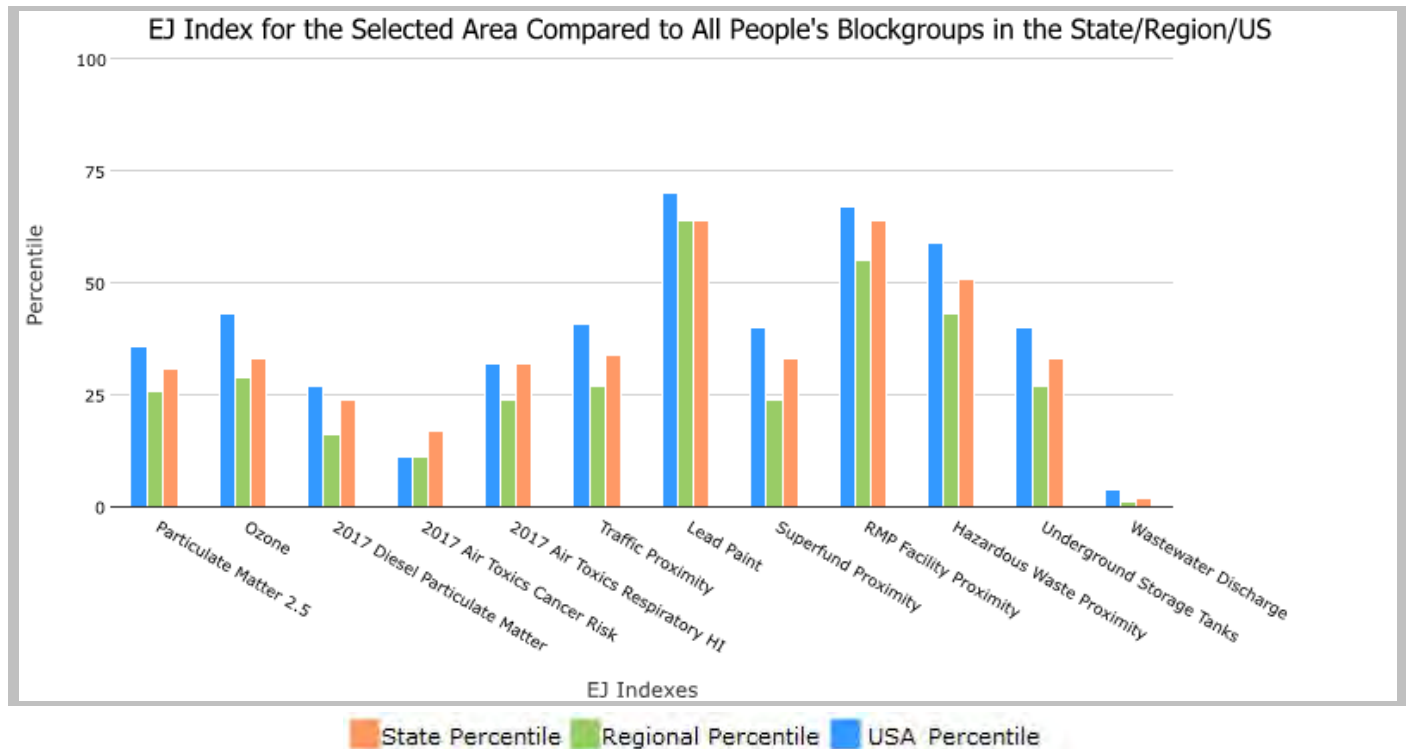
1 mile Ring around the Area, LOUISIANA, EPA Region 6

Approximate Population: 2,525

Input Area (sq. miles): 19.26

MRB S - F-13-IV

Selected Variables	State Percentile	EPA Region Percentile	USA Percentile
Environmental Justice Indexes			
EJ Index for Particulate Matter 2.5	31	26	36
EJ Index for Ozone	33	29	43
EJ Index for 2017 Diesel Particulate Matter*	24	16	27
EJ Index for 2017 Air Toxics Cancer Risk*	17	11	11
EJ Index for 2017 Air Toxics Respiratory HI*	32	24	32
EJ Index for Traffic Proximity	34	27	41
EJ Index for Lead Paint	64	64	70
EJ Index for Superfund Proximity	33	24	40
EJ Index for RMP Facility Proximity	64	55	67
EJ Index for Hazardous Waste Proximity	51	43	59
EJ Index for Underground Storage Tanks	33	27	40
EJ Index for Wastewater Discharge	2	1	4



This report shows the values for environmental and demographic indicators and EJSCREEN indexes. It shows environmental and demographic raw data (e.g., the estimated concentration of ozone in the air), and also shows what percentile each raw data value represents. These percentiles provide perspective on how the selected block group or buffer area compares to the entire state, EPA region, or nation. For example, if a given location is at the 95th percentile nationwide, this means that only 5 percent of the US population has a higher block group value than the average person in the location being analyzed. The years for which the data are available, and the methods used, vary across these indicators. Important caveats and uncertainties apply to this screening-level information, so it is essential to understand the limitations on appropriate interpretations and applications of these indicators. Please see EJSCREEN documentation for discussion of these issues before using reports.

EJScreen Report (Version 2.0)

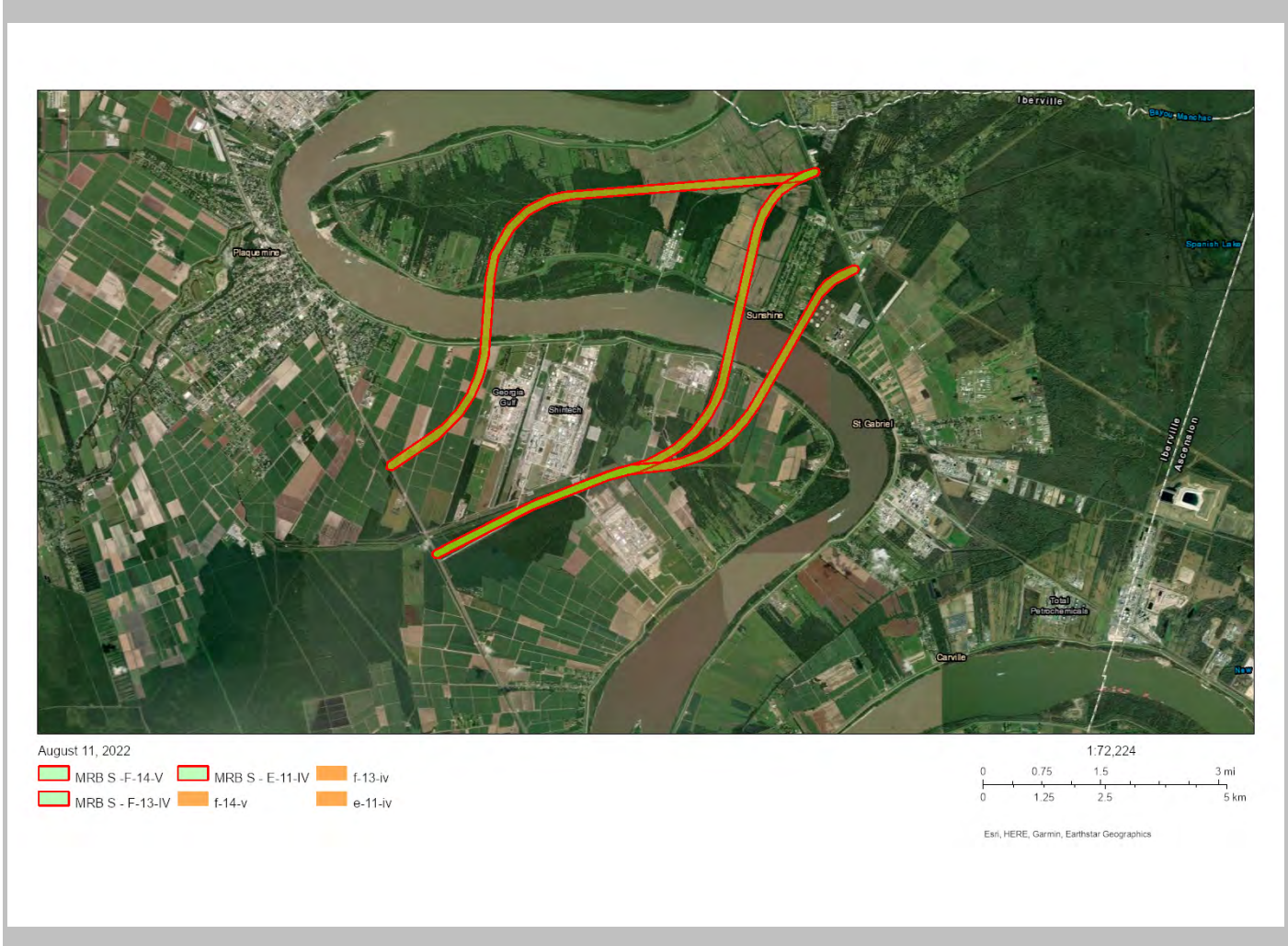


1 mile Ring around the Area, LOUISIANA, EPA Region 6

Approximate Population: 2,525

Input Area (sq. miles): 19.26

MRB S - F-13-IV



Sites reporting to EPA	
Superfund NPL	0
Hazardous Waste Treatment, Storage, and Disposal Facilities (TSDF)	3

EJScreen Report (Version 2.0)

1 mile Ring around the Area, LOUISIANA, EPA Region 6

Approximate Population: 2,525

Input Area (sq. miles): 19.26

MRB S - F-13-IV

Selected Variables	Value	State Avg.	%ile in State	EPA Region Avg.	%ile in EPA Region	USA Avg.	%ile in USA
Pollution and Sources							
Particulate Matter 2.5 ($\mu\text{g}/\text{m}^3$)	10.1	9.22	89	9.32	81	8.74	85
Ozone (ppb)	37.4	37.2	50	41.1	26	42.6	18
2017 Diesel Particulate Matter* ($\mu\text{g}/\text{m}^3$)	0.34	0.298	66	0.219	80-90th	0.295	70-80th
2017 Air Toxics Cancer Risk* (lifetime risk per million)	180	41	99	32	95-100th	29	95-100th
2017 Air Toxics Respiratory HI*	0.59	0.45	95	0.37	95-100th	0.36	95-100th
Traffic Proximity (daily traffic count/distance to road)	47	560	23	470	21	710	22
Lead Paint (% Pre-1960 Housing)	0.051	0.2	28	0.16	46	0.28	29
Superfund Proximity (site count/km distance)	0.033	0.086	37	0.08	43	0.13	29
RMP Facility Proximity (facility count/km distance)	1.1	0.91	72	0.83	76	0.75	78
Hazardous Waste Proximity (facility count/km distance)	1.2	1.4	59	0.8	77	2.2	59
Underground Storage Tanks (count/km ²)	0.15	2	27	2	23	3.9	25
Wastewater Discharge (toxicity-weighted concentration/m distance)	0.5	0.42	94	0.5	96	12	91
Socioeconomic Indicators							
Demographic Index	36%	40%	50	44%	42	36%	58
People of Color	47%	41%	61	52%	46	40%	63
Low Income	25%	39%	28	36%	35	31%	44
Unemployment Rate	2%	6%	20	5%	20	5%	20
Linguistically Isolated	0%	2%	63	6%	37	5%	45
Less Than High School Education	11%	15%	42	15%	47	12%	58
Under Age 5	6%	7%	47	7%	42	6%	51
Over Age 64	20%	15%	79	13%	82	16%	75

*Diesel particulate matter, air toxics cancer risk, and air toxics respiratory hazard index are from the EPA's 2017 Air Toxics Data Update, which is the Agency's ongoing, comprehensive evaluation of air toxics in the United States. This effort aims to prioritize air toxics, emission sources, and locations of interest for further study. It is important to remember that the air toxics data presented here provide broad estimates of health risks over geographic areas of the country, not definitive risks to specific individuals or locations. Cancer risks and hazard indices from the Air Toxics Data Update are reported to one significant figure and any additional significant figures here are due to rounding. More information on the Air Toxics Data Update can be found at: <https://www.epa.gov/haps/air-toxics-data-update>.

For additional information, see: www.epa.gov/environmentaljustice

EJScreen is a screening tool for pre-decisional use only. It can help identify areas that may warrant additional consideration, analysis, or outreach. It does not provide a basis for decision-making, but it may help identify potential areas of EJ concern. Users should keep in mind that screening tools are subject to substantial uncertainty in their demographic and environmental data, particularly when looking at small geographic areas. Important caveats and uncertainties apply to this screening-level information, so it is essential to understand the limitations on appropriate interpretations and applications of these indicators. Please see EJScreen documentation for discussion of these issues before using reports. This screening tool does not provide data on every environmental impact and demographic factor that may be relevant to a particular location. EJScreen outputs should be supplemented with additional information and local knowledge before taking any action to address potential EJ concerns.

EJScreen Report (Version 2.0)



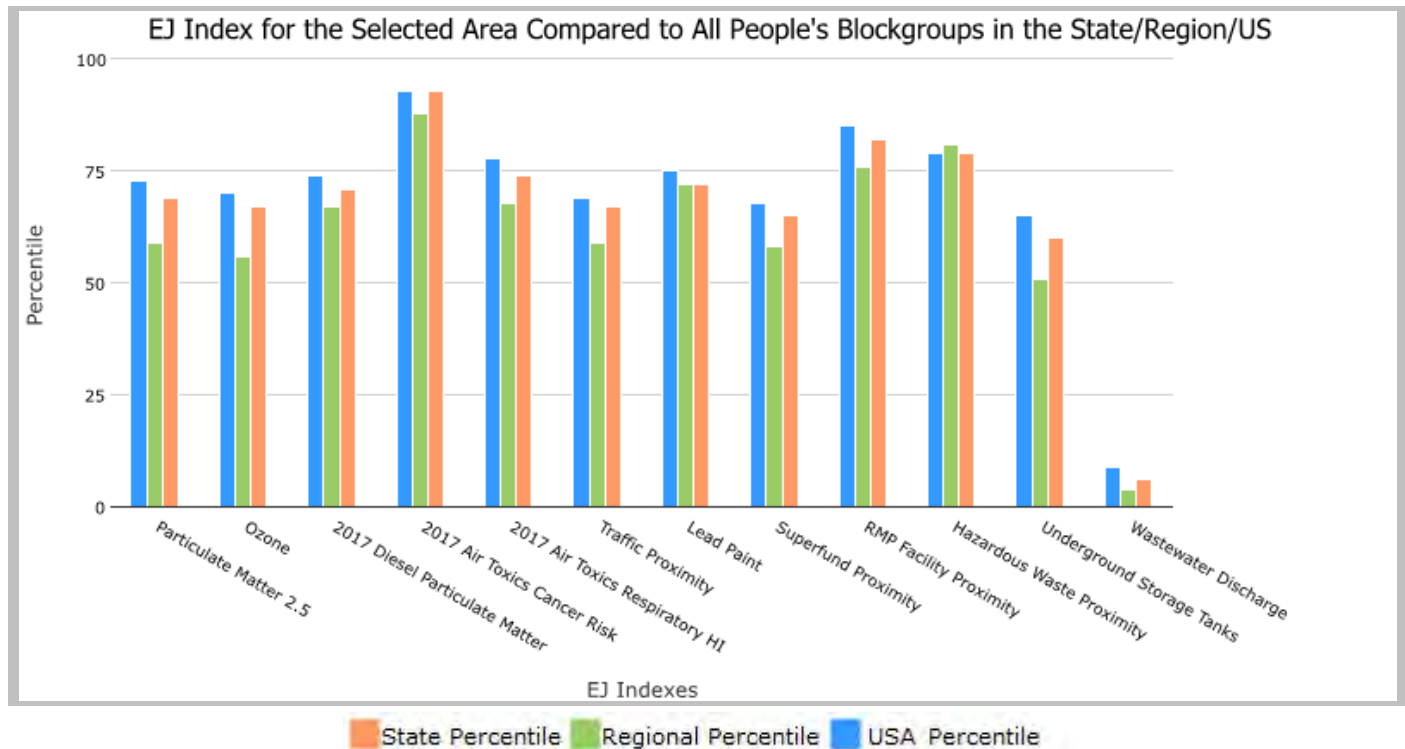
1 mile Ring around the Area, LOUISIANA, EPA Region 6

Approximate Population: 1,365

Input Area (sq. miles): 17.77

MRB S -F-14-V

Selected Variables	State Percentile	EPA Region Percentile	USA Percentile
Environmental Justice Indexes			
EJ Index for Particulate Matter 2.5	69	59	73
EJ Index for Ozone	67	56	70
EJ Index for 2017 Diesel Particulate Matter*	71	67	74
EJ Index for 2017 Air Toxics Cancer Risk*	93	88	93
EJ Index for 2017 Air Toxics Respiratory HI*	74	68	78
EJ Index for Traffic Proximity	67	59	69
EJ Index for Lead Paint	72	72	75
EJ Index for Superfund Proximity	65	58	68
EJ Index for RMP Facility Proximity	82	76	85
EJ Index for Hazardous Waste Proximity	79	81	79
EJ Index for Underground Storage Tanks	60	51	65
EJ Index for Wastewater Discharge	6	4	9



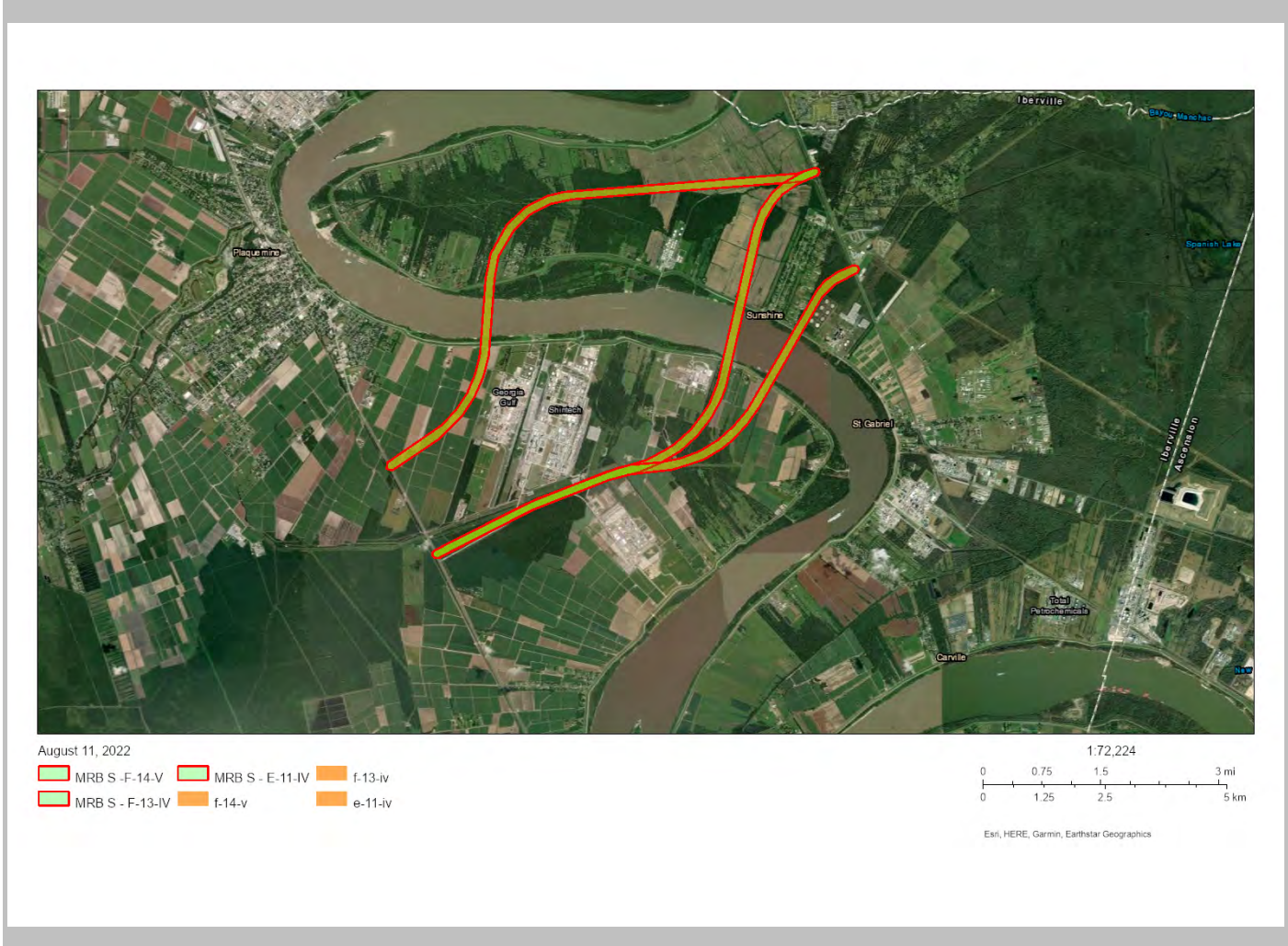
This report shows the values for environmental and demographic indicators and EJSCREEN indexes. It shows environmental and demographic raw data (e.g., the estimated concentration of ozone in the air), and also shows what percentile each raw data value represents. These percentiles provide perspective on how the selected block group or buffer area compares to the entire state, EPA region, or nation. For example, if a given location is at the 95th percentile nationwide, this means that only 5 percent of the US population has a higher block group value than the average person in the location being analyzed. The years for which the data are available, and the methods used, vary across these indicators. Important caveats and uncertainties apply to this screening-level information, so it is essential to understand the limitations on appropriate interpretations and applications of these indicators. Please see EJSCREEN documentation for discussion of these issues before using reports.

1 mile Ring around the Area, LOUISIANA, EPA Region 6

Approximate Population: 1,365

Input Area (sq. miles): 17.77

MRB S -F-14-V



Sites reporting to EPA	
Superfund NPL	0
Hazardous Waste Treatment, Storage, and Disposal Facilities (TSDF)	2

EJScreen Report (Version 2.0)

1 mile Ring around the Area, LOUISIANA, EPA Region 6

Approximate Population: 1,365

Input Area (sq. miles): 17.77

MRB S -F-14-V

Selected Variables	Value	State Avg.	%ile in State	EPA Region Avg.	%ile in EPA Region	USA Avg.	%ile in USA
Pollution and Sources							
Particulate Matter 2.5 ($\mu\text{g}/\text{m}^3$)	10.1	9.22	87	9.32	79	8.74	84
Ozone (ppb)	37.2	37.2	49	41.1	26	42.6	18
2017 Diesel Particulate Matter* ($\mu\text{g}/\text{m}^3$)	0.333	0.298	65	0.219	80-90th	0.295	60-70th
2017 Air Toxics Cancer Risk* (lifetime risk per million)	170	41	99	32	95-100th	29	95-100th
2017 Air Toxics Respiratory HI*	0.63	0.45	96	0.37	95-100th	0.36	95-100th
Traffic Proximity (daily traffic count/distance to road)	96	560	35	470	34	710	33
Lead Paint (% Pre-1960 Housing)	0.098	0.2	44	0.16	58	0.28	39
Superfund Proximity (site count/km distance)	0.032	0.086	36	0.08	41	0.13	28
RMP Facility Proximity (facility count/km distance)	1.5	0.91	79	0.83	83	0.75	84
Hazardous Waste Proximity (facility count/km distance)	1.6	1.4	67	0.8	84	2.2	66
Underground Storage Tanks (count/km ²)	0.14	2	27	2	23	3.9	25
Wastewater Discharge (toxicity-weighted concentration/m distance)	0.29	0.42	93	0.5	95	12	89
Socioeconomic Indicators							
Demographic Index	48%	40%	65	44%	59	36%	71
People of Color	64%	41%	74	52%	62	40%	74
Low Income	32%	39%	42	36%	47	31%	57
Unemployment Rate	2%	6%	28	5%	30	5%	30
Linguistically Isolated	0%	2%	63	6%	37	5%	45
Less Than High School Education	12%	15%	45	15%	50	12%	61
Under Age 5	5%	7%	36	7%	31	6%	39
Over Age 64	20%	15%	79	13%	83	16%	76

*Diesel particulate matter, air toxics cancer risk, and air toxics respiratory hazard index are from the EPA's 2017 Air Toxics Data Update, which is the Agency's ongoing, comprehensive evaluation of air toxics in the United States. This effort aims to prioritize air toxics, emission sources, and locations of interest for further study. It is important to remember that the air toxics data presented here provide broad estimates of health risks over geographic areas of the country, not definitive risks to specific individuals or locations. Cancer risks and hazard indices from the Air Toxics Data Update are reported to one significant figure and any additional significant figures here are due to rounding. More information on the Air Toxics Data Update can be found at: <https://www.epa.gov/haps/air-toxics-data-update>.

For additional information, see: www.epa.gov/environmentaljustice

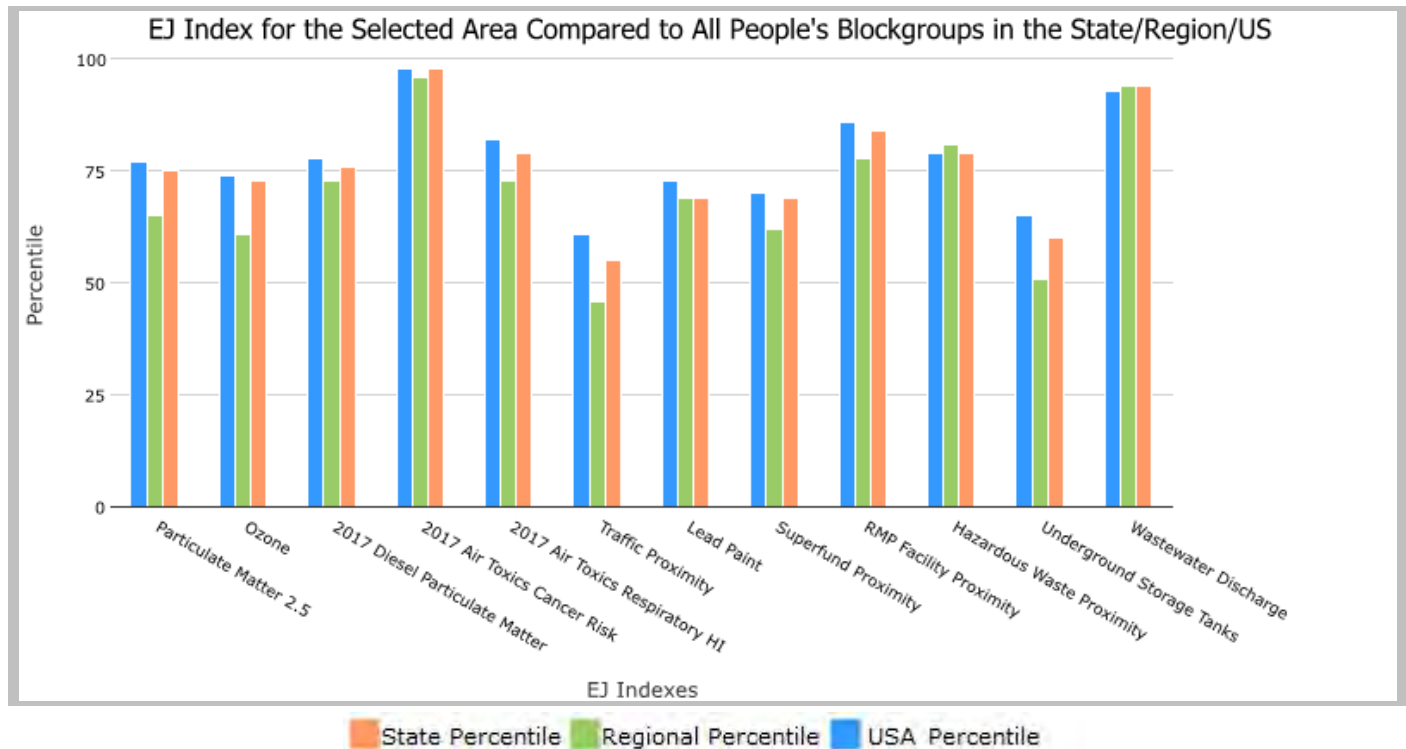
EJScreen is a screening tool for pre-decisional use only. It can help identify areas that may warrant additional consideration, analysis, or outreach. It does not provide a basis for decision-making, but it may help identify potential areas of EJ concern. Users should keep in mind that screening tools are subject to substantial uncertainty in their demographic and environmental data, particularly when looking at small geographic areas. Important caveats and uncertainties apply to this screening-level information, so it is essential to understand the limitations on appropriate interpretations and applications of these indicators. Please see EJScreen documentation for discussion of these issues before using reports. This screening tool does not provide data on every environmental impact and demographic factor that may be relevant to a particular location. EJScreen outputs should be supplemented with additional information and local knowledge before taking any action to address potential EJ concerns.

.5 miles Ring Centered at 30.284637,-91.124871, LOUISIANA, EPA Region 6

Approximate Population: 526

Input Area (sq. miles): 0.79

Selected Variables	State Percentile	EPA Region Percentile	USA Percentile
Environmental Justice Indexes			
EJ Index for Particulate Matter 2.5	75	65	77
EJ Index for Ozone	73	61	74
EJ Index for 2017 Diesel Particulate Matter*	76	73	78
EJ Index for 2017 Air Toxics Cancer Risk*	98	96	98
EJ Index for 2017 Air Toxics Respiratory HI*	79	73	82
EJ Index for Traffic Proximity	55	46	61
EJ Index for Lead Paint	69	69	73
EJ Index for Superfund Proximity	69	62	70
EJ Index for RMP Facility Proximity	84	78	86
EJ Index for Hazardous Waste Proximity	79	81	79
EJ Index for Underground Storage Tanks	60	51	65
EJ Index for Wastewater Discharge	94	94	93

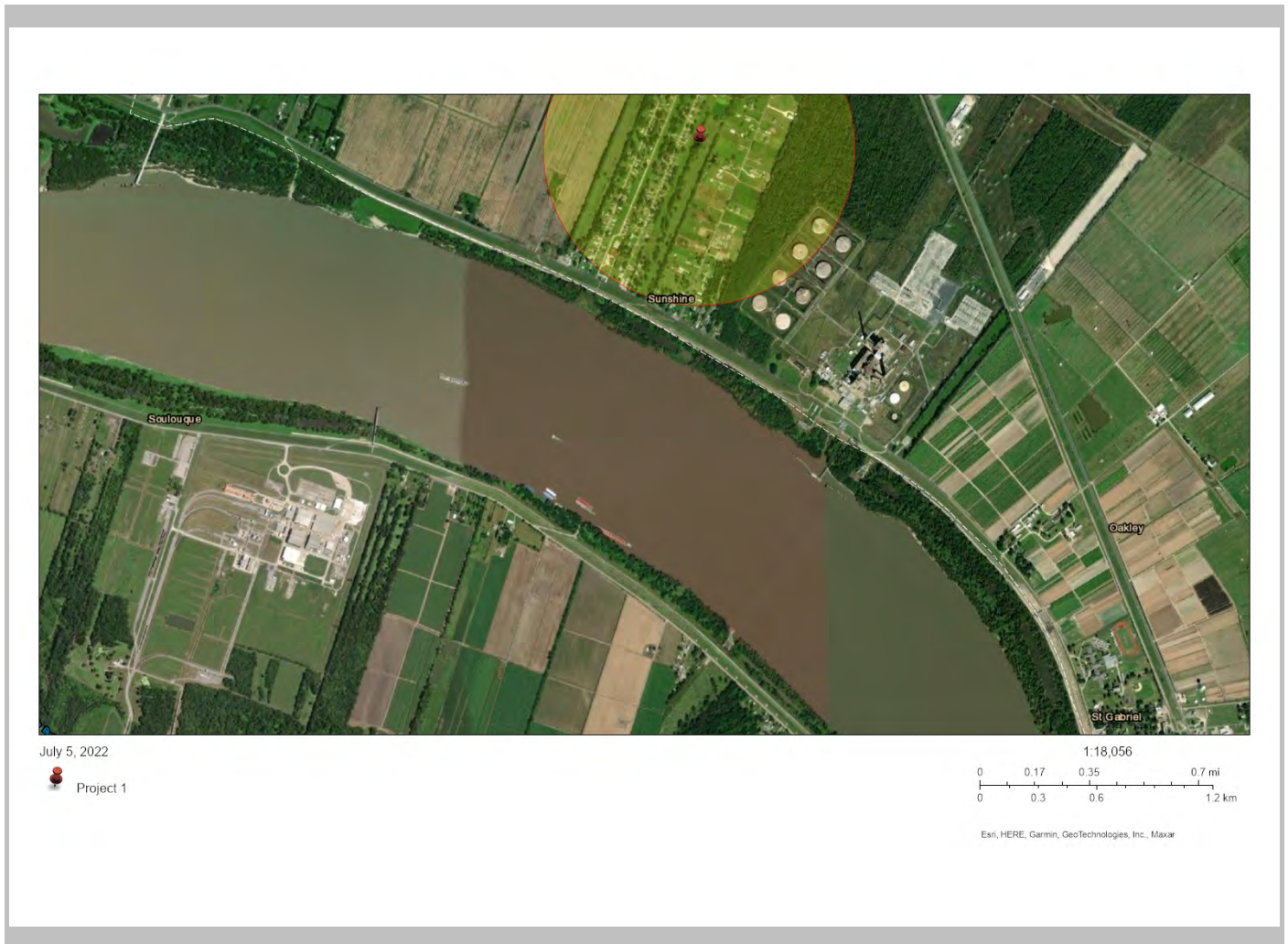


This report shows the values for environmental and demographic indicators and EJSCEEN indexes. It shows environmental and demographic raw data (e.g., the estimated concentration of ozone in the air), and also shows what percentile each raw data value represents. These percentiles provide perspective on how the selected block group or buffer area compares to the entire state, EPA region, or nation. For example, if a given location is at the 95th percentile nationwide, this means that only 5 percent of the US population has a higher block group value than the average person in the location being analyzed. The years for which the data are available, and the methods used, vary across these indicators. Important caveats and uncertainties apply to this screening-level information, so it is essential to understand the limitations on appropriate interpretations and applications of these indicators. Please see EJSCEEN documentation for discussion of these issues before using reports.

.5 miles Ring Centered at 30.284637,-91.124871, LOUISIANA, EPA Region 6

Approximate Population: 526

Input Area (sq. miles): 0.79



Sites reporting to EPA	
Superfund NPL	0
Hazardous Waste Treatment, Storage, and Disposal Facilities (TSDF)	0

EJScreen Report (Version 2.0)



.5 miles Ring Centered at 30.284637,-91.124871, LOUISIANA, EPA Region 6

Approximate Population: 526

Input Area (sq. miles): 0.79

Selected Variables	Value	State Avg.	%ile in State	EPA Region Avg.	%ile in EPA Region	USA Avg.	%ile in USA
Pollution and Sources							
Particulate Matter 2.5 ($\mu\text{g}/\text{m}^3$)	10.1	9.22	90	9.32	81	8.74	85
Ozone (ppb)	37.4	37.2	50	41.1	26	42.6	18
2017 Diesel Particulate Matter* ($\mu\text{g}/\text{m}^3$)	0.347	0.298	67	0.219	80-90th	0.295	70-80th
2017 Air Toxics Cancer Risk* (lifetime risk per million)	200	41	99	32	95-100th	29	95-100th
2017 Air Toxics Respiratory HI*	0.6	0.45	96	0.37	95-100th	0.36	95-100th
Traffic Proximity (daily traffic count/distance to road)	16	560	13	470	10	710	11
Lead Paint (% Pre-1960 Housing)	0.083	0.2	39	0.16	55	0.28	36
Superfund Proximity (site count/km distance)	0.032	0.086	36	0.08	42	0.13	28
RMP Facility Proximity (facility count/km distance)	1.5	0.91	80	0.83	84	0.75	85
Hazardous Waste Proximity (facility count/km distance)	1.5	1.4	65	0.8	83	2.2	65
Underground Storage Tanks (count/km ²)	0.083	2	22	2	20	3.9	22
Wastewater Discharge (toxicity-weighted concentration/m distance)	0.19	0.42	92	0.5	94	12	87
Socioeconomic Indicators							
Demographic Index	50%	40%	68	44%	62	36%	74
People of Color	69%	41%	77	52%	66	40%	77
Low Income	31%	39%	40	36%	45	31%	56
Unemployment Rate	1%	6%	16	5%	15	5%	14
Linguistically Isolated	0%	2%	62	6%	37	5%	45
Less Than High School Education	11%	15%	42	15%	47	12%	58
Under Age 5	5%	7%	44	7%	39	6%	48
Over Age 64	17%	15%	65	13%	72	16%	63

*Diesel particulate matter, air toxics cancer risk, and air toxics respiratory hazard index are from the EPA's 2017 Air Toxics Data Update, which is the Agency's ongoing, comprehensive evaluation of air toxics in the United States. This effort aims to prioritize air toxics, emission sources, and locations of interest for further study. It is important to remember that the air toxics data presented here provide broad estimates of health risks over geographic areas of the country, not definitive risks to specific individuals or locations. Cancer risks and hazard indices from the Air Toxics Data Update are reported to one significant figure and any additional significant figures here are due to rounding. More information on the Air Toxics Data Update can be found at: <https://www.epa.gov/haps/air-toxics-data-update>.

For additional information, see: www.epa.gov/environmentaljustice

EJScreen is a screening tool for pre-decisional use only. It can help identify areas that may warrant additional consideration, analysis, or outreach. It does not provide a basis for decision-making, but it may help identify potential areas of EJ concern. Users should keep in mind that screening tools are subject to substantial uncertainty in their demographic and environmental data, particularly when looking at small geographic areas. Important caveats and uncertainties apply to this screening-level information, so it is essential to understand the limitations on appropriate interpretations and applications of these indicators. Please see EJScreen documentation for discussion of these issues before using reports. This screening tool does not provide data on every environmental impact and demographic factor that may be relevant to a particular location. EJScreen outputs should be supplemented with additional information and local knowledge before taking any action to address potential EJ concerns.